



World Association
of Girl Guides
and Girl Scouts

Association mondiale
des Guides et des
Eclaireuses

Asociación
Mundial de las
Guías Scouts

World Thinking Day Activity Pack 2012



“we can save
our planet”

www.worldthinkingday.org



CONTENTS

Introduction	03
History of World Thinking Day	04
How to earn a World Thinking Day Badge	05
How the World Thinking Day fund will be used	06
Five focus countries	
Guyana	08
Ivory Coast	10
Japan	14
Russia	16
Tunisia	18
How to donate to the World Thinking Day fund	20
Advice for leaders	21
About the Theme	
Get Moving! Group activities to introduce the World Thinking Day theme	24
Section 1, Reduce the use of fossil fuels	27
Section 2, Save resources in and around your home	31
Section 3, Switch to sustainable energy solutions	37
Section 4, Speak out to make a difference	44
Instructions and templates for certain activities	48
World Thinking Day merchandise	53
Resources and links	54
Environmental calendar	55
Activity log	56
Donation form	57

INTRODUCTION

WORLD THINKING DAY 2012

Millennium Development Goal 7

The poorest people in the world are the ones who will most feel the effects of environmental degradation and climate change. Ensuring environmental sustainability is a critical foundation for ending this poverty. Girls and young women of all ages around the world are also differently and disproportionately affected by the consequences of environmental degradation and climate change.

The World Thinking Day theme for 2012 is Millennium Development Goal 7: “we can save our planet” and the aim is to raise awareness of the environment and the impacts our lifestyles and choices have on it, so together we can, as one Movement, speak out and take action to save our planet.

Environmental sustainability is the seventh of eight areas of focus made by 189 world leaders at the United Nations Millennium Summit in 2000. It is part of the WAGGGS Global Action Theme, which encourages girls and young women to make a personal commitment to change the world around them by linking to an important agenda: the United Nations’ Millennium Development Goals (MDG).



“we can save our planet”



HISTORY OF WORLD THINKING DAY

Each year on 22 February, Girl Guides and Girl Scouts all over the world celebrate World Thinking Day. World Thinking Day was created in 1926 at the 4th Girl Guide/Girl Scout International Conference, hosted by Girl Scouts of the USA at Camp Edith Macy (now called Edith Macy Conference Centre). Conference attendees agreed there should be a special day when Girl Guides and Girl Scouts around the world think of each other and give thanks and appreciation for the international friendship they find in our Movement.

The delegates chose 22 February as World Thinking Day as it was the mutual birthday of Lord Baden-Powell, founder of the Boy Scout Movement, and his wife Olave, who served as World Chief Guide.

At the 7th World Conference in 1932, held in Poland, a delegate suggested that since birthdays traditionally involve presents, girls could show their appreciation and friendship on World Thinking Day, not only by extending warm wishes to each other, but also by offering a voluntary contribution to the World Association to support Girl Guiding and Girl Scouting in other countries.

Olave wrote to all Girl Guides and Girl Scouts asking them to donate just one penny, and so the World Thinking Day fund was formed. Since then, funds you raise at any point during the whole year and send to WAGGGS' World Thinking Day fund support the development of Girl Guiding and Girl Scouting around the world. Funds ensure the delivery of non-formal education programmes, assist Member Organizations with their projects, support young women to develop leadership and advocacy skills and help grow and share the Movement with more girls and young women around the world.

Since 2009, each World Thinking Day has been themed on the Millennium Development Goals. Focusing on the Millennium Development Goals raises awareness of the theme and encourages girls, young women and members of all ages to make a personal commitment to change the world around them. Each World Thinking Day theme lasts all year and Girl Guides and Girl Scouts can earn a World Thinking Day badge at any time during the year by completing educational activities on the respective theme.



2009 MDG 6
Combating HIV/AIDS and other diseases



2010 MDG 1
Ending poverty and hunger



2011 MDG 3
Gender equality and empowering girls and women



2012 MDG 7
Ensuring environmental sustainability



2013 MDG 4+MDG 5
Reducing child mortality and improving maternal health



2014 MDG 2
Providing universal access to primary education



2015 MDG 8
Developing partnerships for global development



HOW TO EARN A WORLD THINKING DAY BADGE AND PIN

The activities in this pack are divided into four sections, exploring different ways you can take action to save our planet. These are...

1. **Reduce the use of fossil fuels**
(complete two activities)
2. **Save resources in and around your home**
(complete two activities)
3. **Switch to sustainable energy solutions**
(complete two activities)
4. **Speak out to make a difference**
(complete any one activity that delivers WAGGGS' demands on MDG 7)

VISIT THE WORLD THINKING DAY WEBSITE!

Don't forget to share your celebrations for World Thinking Day with Girl Guides and Girl Scouts around the world by logging them on the World Thinking Day website! There will be a special action counter clocking up all the actions you take to save the planet and a map showing where in the World Girl Guides and Girl Scouts are working to protect the environment.

To earn a 2012 World Thinking Day badge, we suggest you complete two activities from each of the first three sections then one activity from section four. One of these activities should be a fundraising activity. The fundraising ideas are marked with the title "Fundraise!" but these are only suggestions and you can substitute them with another fundraising activity.

WORLD THINKING DAY 2012 BADGE



We have designed a new **World Thinking Day badge for 2012**. A green tree grows into a larger tree, helped by the Girl Guiding and Girl Scouting Trefoil, showing how the activities of Girl Guides and Girl Scouts around the world can help save our planet. Why not encourage your group members to get involved in World Thinking Day by giving them a badge when they complete an activity? World Thinking Day badges and pins are available from the **WAGGGS online shop**,

www.wagggs-shop.org

? Did You Know

- As it takes more time to gather water and fuel, the available time for education or other economic and political activities decreases. Already, the majority of children worldwide who do not attend school are girls.

✓ **Do Something Today**
Take a shower, not a bath.
Turn the shower off while you are using the soap/shampoo

HOW THE WORLD THINKING DAY FUND WILL BE USED

Donate to WAGGGS for World Thinking Day 2012 and help other girls and young women around the world!

As World Thinking Day in 2012 focuses on **environmental sustainability**, it is important to acknowledge that girls and women are disproportionately affected by environmental issues around the world:

- Without the right to own land, **women are often denied access to technologies and resources** such as water resources, irrigation services, credit, extension, and seeds, which strengthen their capacity to manage natural resources in a more sustainable manner
- Water contamination and deforestation **increase the time women must spend and often the distance they must travel** to secure fuel and water
- **Women are most often the primary users, providers, and managers of water in rural households, and are guardians of household hygiene.** With improved access to safe drinking water, women have more time to earn income, girls are more likely to attend school, family health and hygiene are improved, and women suffer less from the burden of carrying heavy loads
- Lack of safe, private, nearby sanitation facilities **exposes women to harassment, assault and erodes their dignity**
- Because of their higher levels of dependence on local natural resources for their livelihood, **women are disproportionately affected by extreme weather events** resulting from climate change



WAGGGS works to ensure that Girl Guides and Girl Scouts everywhere are able to act as **leaders** within their communities, finding ways to address these issues. We believe in empowering girls through a three-step process of belonging, leadership and advocacy. With your help to raise much needed funds through World Thinking Day, WAGGGS will continue to develop Girl Guiding and Girl Scouting around the world and make this possible.

“we can save
our planet”

With your support to the World Thinking Day fund we will:

1 Increase each girl's sense of self through peer support and a place to belong

Strengthening the Movement so more girls can benefit worldwide

Ten million girls and young women are already benefiting from being a Girl Guide or Girl Scout, finding new friends and a safe place where they can explore and learn by doing. Learning through non-formal education, girls and young women are developing leadership and life skills. Individual girls, groups, and associations are tackling the challenges of the Millennium Development Goals as part of our Vision for the future: “We are a growing worldwide Movement – the voice of girls and young women who influence issues they care about and build a better world”.

2 Increase her confidence by helping her develop as a leader

Developing the leaders of the future

Girls at all levels in Girl Guiding and Girl Scouting learn how to be a leader. Internationally the WAGGGS Leadership Development Programme (WLDP) provides young women from around the world the opportunity to develop their leadership skills, acquire a better awareness of their leadership roles within their association, and also identify their own leadership path.

3 Increase her impact by teaching her effective advocacy skills, giving her a platform to speak from and encouraging her to take action on the issues that matter for her and those around her

The voice of girls and young women on key development issues

Representatives from WAGGGS attend many important global gatherings to ensure that the voices of girls and young women are heard. Recent examples include the COP global climate change conferences, the UN Commission on the Status of Women annual sessions and the UN Youth Conference in New York.

FOCUS COUNTRIES

For World Thinking Day 2012 we have identified **five countries** (one from each Region in which WAGGGS operates) to showcase what Girl Guides and Girl Scouts are doing to help achieve environmental sustainability and support them to have a **long-term, practical and beneficial impact** on the communities in which they live. The five focus countries are:

- **Guyana** (Western Hemisphere Region)
- **Ivory Coast** (Africa Region)
- **Japan** (Asia Pacific Region)
- **Russia** (Europe Region)
- **Tunisia** (Arab Region)

Thank you to Environmental Resources Management (ERM) for their help in producing this pack and wider support for World Thinking Day (www.erm.com).

FOCUS COUNTRY: GUYANA

WAGGGS Region: Western Hemisphere

Girl Guiding and Girl Scouting introduced: 1922

1,809 Girl Guides and Girl Scouts

AGE GROUPS:

Ranger Guide: 14-18 or 20

Guide: 10-16

Brownie Guide: 7-11

ADDRESS:

Guyana Girl Guides Association
Chief Commissioner
106 Brickdam
Stabroek, Georgetown
Guyana

.....



“The rose has thorns only for those who would gather it.”
Chinese Proverb



GIRL SCOUT PROMISE

I promise that I will do my best
To do my duty to God
To serve my country and help other people, and
To keep the Guide Law

BROWNIE GUIDE PROMISE

I promise that I will do my best
To do my duty to God
To serve my country and help other people, and
To keep the Brownie Guide Law

GIRL GUIDE LAW

A Guide is loyal and can be trusted
A Guide is helpful
A Guide is polite and considerate
A Guide is friendly and a sister to all Guides
A Guide is kind to animals and respects all living things
A Guide is obedient
A Guide has courage and is cheerful in all difficulties
A Guide makes good use of her time
A Guide takes care of her own possessions and those of other people
A Guide is self-controlled in all she thinks, says and does

BROWNIE GUIDE LAW

A Brownie Guide thinks of others before herself and does a good turn every day

? Did You Know

- Rainforests once covered **14 per cent** of the Earth's land surface. Now they cover just **6 per cent** and experts estimate that the last rainforests could be destroyed in less than 40 years.

MDG 7 IN GUYANA



Guyana is home to one of the world's last intact tropical rainforests, which covers almost 90 per cent of the country, and is unique and very diverse. However, deforestation in the country is increasing rapidly. Trees are cut down to sell, but also to clear the way for plantations and mining, and to provide firewood and charcoal.

In 2009 the government of Guyana signed a deal with the Norwegian government to try to save the rainforests. This deal was also part of a campaign to slow down climate change. Despite this, some experts think deforestation rates have increased since the agreement.

As with many countries, Guyana produces a lot of waste too, and this has resulted in problems with water pollution. This may become a health hazard for humans during the rainy season, when the country often has very bad flooding.

.....

FOCUS COUNTRY ACTIVITY

ECO-DOMINOES!

Although it is part of mainland South America, Guyana is also part of the Caribbean. The game of dominoes is played in many Caribbean countries and is very popular in Guyana; try making your own set of dominoes with an environmental theme. Using recycled paper or card, make a set of 28 domino tiles but replace the numbers with words. You could write positive environmental words such as 'nature', 'conservation' and 'recycling' in green and negative words such as 'pollution' and 'climate change' in red. Match the red or green words together. Play the game with your group.

To learn all about Girl Guiding and Girl Scouting in Guyana, visit the WTD website.



ENVIRONMENTAL INDICATORS

- Nearly **5 per cent** of land and marine areas are now protected as nature reserves
- One per cent** of Guyana's water sources are being used to provide water for people, industry and agriculture
- 11 per cent** of people use solid fuels, such as coal, to heat their homes
- 94 per cent** of people have access to good quality drinking water
- Only **81 per cent** have access to basic sanitation
- One in three** people live in slums

FOCUS COUNTRY: IVORY COAST

WAGGGS Region: Africa

Girl Guiding and Girl Scouting introduced: 1937

1,900 Girl Guides and Girl Scouts

ADDRESS:

Fédération Ivoirienne du Scoutisme Féminin
08 BP 12
ABIDJAN 08
Ivory Coast

Girl Guiding and Girl Scouting in the Ivory Coast is carried out under the auspices of Scoutisme Féminin de Côte d'Ivoire and made up of three Associations, Guides Catholiques de Côte d'Ivoire, Eclaireuses Laiques de Côte d'Ivoire and Eclaireuses Unionistes de Côte d'Ivoire. Girl Guides and Girl Scouts are now active throughout the entire country.

Guides Catholiques de Côte d'Ivoire

AGE GROUPS:

Aînée Ranger: 18-25
Girl Guide: 12-17
Jeannette Brownie: 8-12

ADDRESS:

Guides Catholiques de Côte d'Ivoire
08 BP 12
Abidjan 08
Ivory Coast

? Did You Know

- At any moment, half of the world's hospital beds are occupied by patients suffering from diseases associated with unsafe drinking water, poor sanitation and poor hygiene.

GIRL SCOUT PROMISE

On my honour, with the grace of God, I undertake
To do my best to serve God, the Church
and my country
To help others in all circumstances, and
To obey the Guide Law

BROWNIE PROMISE

I promise to do my best to be faithful to God, my
country, my parents, the Law of the Pack and to
do a good turn to someone every day

GUIDE LAW

A Guide is loyal
A Guide thinks first of others
A Guide is generous; she is prepared to help
A Guide is welcoming; she has team spirit
A Guide, sister to every Guide, is at the
service of all
A Guide learns about nature in which she sees
as God's work
A Guide knows how to obey
A Guide does not fear endeavour;
she does nothing by halves
A Guide likes her work and respects that of
other people
A Guide is self-controlled; she is pure and cheerful

BROWNIE GIRL SCOUT LAW

A Brownie is always clean
A Brownie is always active
A Brownie is always cheerful
A Brownie is always truthful
A Brownie thinks first of others

Les Eclaireuses Laiques de Côte d'Ivoire

AGE GROUPS:

Eclaireuse aînée Senior Guide: 17-21
Eclaireuse Girl Scout: 12-16
Louvette Lark/Brownie: 6-11

ADDRESS:

Eclaireuses Laiques de Côte d'Ivoire
04 BP
686 ABIDJAN 04
Ivory Coast

*Climate Change can be reversed through
Simplicity, Sustainability, and Sanity.*

Diana Beresford-Kroeger, botanist



GIRL SCOUT PROMISE

I promise on my honour and before God to do
everything possible to: serve my country, offer
help on every occasion and obey the Guide Law

BROWNIE PROMISE

I promise to do my best to obey the Brownie Law
and to do a Good Turn every day

GUIDE LAW

A Girl Scout is true to her word
A Girl Scout is loyal and chivalrous
A Girl Scout is useful and does a Good Turn
every day
A Girl Scout is a friend to all and a sister to all
Girl Guides/Girl Scouts
A Girl Scout is courteous and respects the beliefs
of others
A Girl Scout is a friend to animals and plants
A Girl Scout is obedient
A Girl Scout is always in a good humour
A Girl Scout is hard working, economic and
respectful other peoples' property
A Girl Scout is a clean in body, words, thoughts
and deeds

SENIOR SCOUT LAW

A Senior Scout is a woman of honour
A Senior Scout is a woman of character
A Senior Scout has a sense of responsibility
A Senior Scout places the general interest before
self interest
A Senior Scout learns about and fights for a more
humane world

BROWNIE LAW

A Brownie always tells the truth
A Brownie seeks to give happiness to others
A Brownie obeys the Pack password

✓ **Do Something Today**
Choose food with low/no packaging

MDG 7 IN IVORY COAST



Ivory Coast has lost nearly a third of its forests over the last half century. During the 1980s this was particularly bad: its exports of hardwood were greater than Brazil which is a much larger country, and it was thought to have the highest rate of deforestation in the world. Although this rate has slowed down, it is still one of the highest in Africa.

Not only are forests lost to logging for the exportation of wood, but also to make way for farming. The diverse tropical rainforests in the country's south have mostly been replaced by coffee, cocoa and palm plantations. These are an important part of the economy, as Ivory Coast is one of the biggest cocoa producers in the world, but they are not natural habitats and they do not support very diverse animal and plant life. These large areas of agricultural land produce huge amounts of waste, or effluent, which has caused water pollution.

ENVIRONMENTAL INDICATORS

- Nearly **22 per cent** of land and marine areas are now protected as nature reserves
- **2 per cent** of water sources are used to provide water for people, industry and agriculture
- **79 per cent** of people use solid fuels, such as coal, to heat their homes
- **80 per cent** of people have access to good quality drinking water
- Only **23 per cent** have access to basic sanitation
- **One in two** people live in slums



Trees are the lungs of the Earth.

Diana Beresford-Kroeger, botanist



Take nothing but pictures. Leave nothing but footprints. Kill nothing but time.

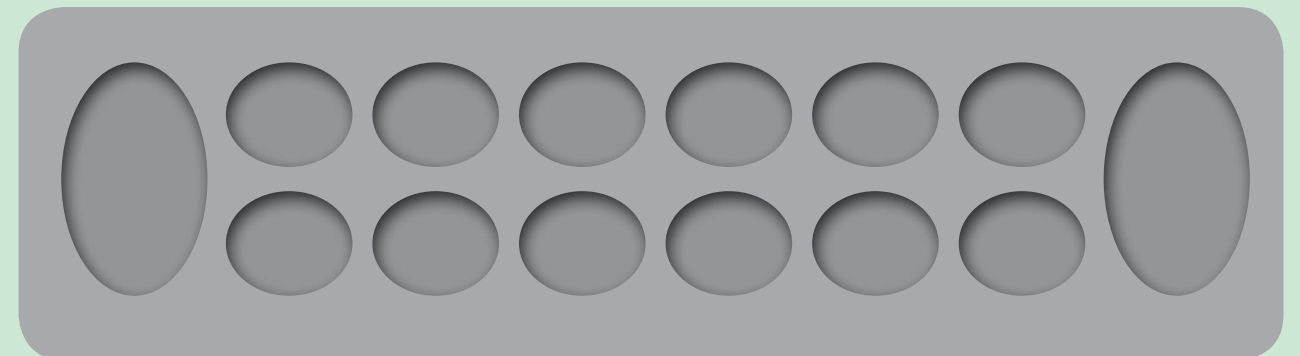
Motto of the Baltimore Grotto, a caving society

✓ **Do Something Today**
Turn your central heating down by one degree Celsius – you will not notice the difference, but it will save up to **ten per cent** on energy bills!

FOCUS COUNTRY ACTIVITY

PLAY WOALEY

Woaley is a simple game from the Ivory Coast for two players. Make a game board like this one – you could make it from wood, scoop holes in sand, or mark out circles on paper. You need 48 playing pieces such as seeds, shells, marbles or dried beans. Put four pieces into each of the small holes



- The object of the game is to capture more pieces than the other player
- Each player 'owns' the row of small holes closest to her, plus the store hole (the big one) on her right
- To move, pick up all the pieces except one from one of your small holes and move counter-clockwise round the board, dropping one piece into each hole without skipping, until your hand is empty
- If the last piece you drop brings the total pieces in that hole to either two or four, you capture the contents of that hole and put them in your store hole
- If you don't have any pieces in your holes you have to miss your turn. The game ends when nobody can play any more, and any leftover pieces in your holes are added to your store hole
- The winner is the player who captures more than half of the pieces

To learn all about Girl Guiding and Girl Scouting in the Ivory Coast, visit the WTD website.

FOCUS COUNTRY: JAPAN

WAGGGS Region: Asia Pacific

Girl Guiding and Girl Scouting introduced: **1919** (Founder Member of WAGGGS)

43,159 Girl Guides and Girl Scouts

AGE GROUPS:

Ranger Girl Scout: 15-18
Senior Girl Scout: 12-15
Junior Girl Scout: 9-12
Brownie Girl Scout: 6-9
Tenderfoot Girl Scout: 5-6

ADDRESS:

Girl Scouts of Japan
1-40-3 Nishihara
Shibuya-Ku
Tokyo 151-0066
Japan

.....

"I believe every child in this world needs to have a relationship with the land to know how to nourish themselves ... and how to connect with the community around them."

Alice Waters, chef and sustainable food activist



To learn all about Girl Guiding and Girl Scouting in Japan, visit the WTD website.

GIRL SCOUT PROMISE

I promise to:
Do my duty to God (Buddha)
Be responsible for my community, my country and the world
Try to be helpful to other people
and Live by the Girl Scout Law

TENDERFOOT GIRL SCOUT PROMISE

I am a Girl Scout
I look and listen carefully, and be friendly to everyone

GIRL SCOUT LAW

I am cheerful and courageous at all times
I respect all living things
I am a friend to all, and a sister to every Girl Scout
I am courteous
I use time and resources wisely
I think and act on my own
I am responsible for what I say and do
I try to be sincere

BROWNIE GIRL SCOUT LAW

I am cheerful and courageous at all times
I respect all living things
I am a friend to all, and a sister to every Girl Scout

? Did You Know

- Women are often central in determining their household's contribution to climate change and lead the way in low-emission living. In developed countries, women typically eat less meat than men and more often choose "green" products when given the option.

MDG 7 IN JAPAN



The most serious environmental threat to Japan is natural disasters. It lies on active fault lines, so sometimes has earthquakes, typhoons, tsunamis and landslides which can be extremely destructive. Japan takes a third of its electricity

supply from nuclear energy, and these disasters can cause a serious threat if they damage a nuclear power plant, as happened in March 2011.

Another problem is over construction. This is partly to protect against natural disasters, but also because of overcrowding in a small country with a large population. There is little untouched natural habitat. Japan also has problems with air pollution. This is due to the use of fossil fuels and burning waste. However, this problem has been improving.

Fish makes up a big part of the Japanese diet. In 2000 Japan had the third highest catches of fish in the world. This huge demand might be more than the oceans can meet. Worldwide, fish populations are thought to be under too much pressure, and Japan's catch each year has been getting smaller and smaller.

.....

ENVIRONMENTAL INDICATORS

- Nearly **11 per cent** of land and marine areas are now protected as nature reserves
- **20 per cent** of water sources are used to provide water for people, industry and agriculture
- **5 per cent** of people use solid fuels, such as coal, to heat their homes

✓ **Do Something Today**
Do not leave electronics on standby as they still use power. **Unplug them!**

FOCUS COUNTRY ACTIVITY

JAPANESE ORIGAMI

A popular craft in Japan is the art of paper-folding, or 'origami'. One traditional shape is the kusudama, where lots of identical flower shapes are glued together into a ball. See page 51 for instructions to make the kusudama flower. Use recycled paper to show how you can make a beautiful decoration without wasting resources. If you enjoy this, why not research other origami patterns to try? Don't forget to tell us about your resulting work, upload photos to the WTD website (or by post to WAGGGS).



FOCUS COUNTRY: RUSSIA

WAGGGS Region: Europe

Girl Guiding and Girl Scouting introduced: 1919

1,997 Girl Guides and Girl Scouts

AGE GROUPS:

Leader: 18+
Senior Girl Scout: 14-18
Girl Scout: 10-13
Junior Girl Scout: 6-9

ADDRESS:

Rossiskaya Assotsiatsia Devochek-Skautov (RADS)
International Commissioner WAGGGS
Kirov Street, 132.B, Apt.34
400079 Volograd
Russia

MDG 7 IN RUSSIA



Russia used to do very little to control pollution, and a lot of its problems today are left over from this time. Water pollution is a major problem in Russia: around half of all its water is polluted and around three quarters of all water found above ground is polluted too. Partly this is because very little water used is properly treated before being put back into water sources like rivers and many waste chemicals are thrown into water sources. Russia's air is also polluted and it is one of the worst countries for air pollution in the world. This pollution comes from industry, and also from vehicles. As more people get cars and other vehicles, this problem becomes more widespread.

Nuclear reactors are a major source of energy in Russia, and there are over 30 in operation. Nuclear waste is very difficult to get rid of safely, and in Russia it has sometimes been dumped in a way that is not safe. Although the waste may have been dumped many years before, it still pollutes environments.

GIRL SCOUT PROMISE

On my honour, I promise that I will do my best
To serve my country
To strive for spiritual perfection
To help those who need my help, and
To live by the Girl Scout Law

GIRL SCOUT LAW

A Girl Scout's honour is to be trusted
A Girl Scout always finishes what she has started
A Girl Scout does her best to be useful and help others
A Girl Scout is friendly, affable and courteous
All Girl Scouts are sisters
A Girl Scout is a friend to nature
A Girl Scout is loyal to her parents, disciplined, and obeys her Leaders' orders
A Girl Scout is always cheerful
A Girl Scout is thrifty and respects others' property
A Girl Scout is pure and noble in thought, in word and in deed

“Never doubt that a small group of thoughtful, committed citizens can change the world; indeed, it's the only thing that ever has.”

Margaret Mead, anthropologist

? Did You Know

- About **90 per cent** of the rubbish in landfill sites could have been recycled.

“It is common for teenage girls to have an average of 200 chemicals on their bodies before getting on the bus in the morning.”

Stacy Malkan, co-founder of the Campaign for Safe Cosmetics

ENVIRONMENTAL INDICATORS

- More than **9 per cent** of land and marine areas are now protected as nature reserves
- 1.5 per cent** of water sources are used to provide water for people, industry and agriculture
- 7 per cent** of people use solid fuels, such as coal, to heat their homes
- 96 per cent** of people have access to good quality drinking water
- 87 per cent** have access to basic sanitation

? Did You Know

- Girl Guide and Girl Scout delegates at the **Young Women's World Forums (YWWF)** are calling on governments around the world to work together to make a fair, ambitious and binding agreement to fight climate change which will support renewable energy sources, protect biodiversity and enforce policies that **'reduce, reuse and recycle'**.

To learn all about Girl Guiding and Girl Scouting in Russia, visit the WTD website.

✓ **Do Something Today**
When cooking, always use a lid on your pan. It takes less energy to heat food that way

FOCUS COUNTRY ACTIVITY

TIN CAN BLINIS

Blinis are a favourite food in Russia, as they are cheap to make, filling and very tasty! Try making these tiny pancakes using an unusual cooking method – candles and tin cans! Be careful, as the can edges may be sharp.

- Mix together a cup of flour with two eggs, a pinch of baking powder and a pinch of salt. Add enough milk to make a smooth, thick batter
- Take an empty tin can, the bigger the better, and throw away the lid. Turn the can upside down, making the solid bottom of the can your frying pan
- Punch holes in the sides of the can, just below the bottom, to let air in
- Clean the can thoroughly then light a tea-light/candle stub and put the tin can over it. The can will get very hot so be careful
- Pour some oil on the bottom surface of the tin can and when it is hot, drop one spoon of blini batter on it
- Let it sizzle and when bubbles appear in the blini, flip it over
- Cook until your blini is light golden brown then eat with butter, cheese, jam or whatever you like!

FOCUS COUNTRY: TUNISIA

WAGGGS Region: Arab

Girl Guiding and Girl Scouting introduced: 1934

7,336 Girl Guides and Girl Scouts

ADDRESS:

Scouts Tunisiens
Tunis Mahragene
Po Box 339
1082 Tunis
Tunisia

FOCUS COUNTRY ACTIVITY

MAKE TUNISIAN FLOWER WATER

Flower water is popular in Tunisia, used in cookery and as perfume. You can make your own flower water:

- Gather one cup of scented flower petals or herb leaves
- Pour on two cups of boiling water, leave overnight to infuse
- Strain to remove the petals or leaves. Store in a refrigerator for up to two weeks
- Always check with an adult that the plants are safe to use!

The activist is not the man who says the river is dirty. The activist is the man who cleans up the river.

Ross Perot, US businessman and former US President candidate

PROMISE

I promise to do my best
To do my duty to God and my country
To help others, and
To follow the Guide Law

LAW

A Girl Guide believes in God and is loyal to her country

A Girl Guide is noble and keeps her promise

A Girl Guide is genuine and contemporary

A Girl Guide is disciplined and law abiding

A Girl Guide is alert and attentive

A Girl Guide looks after the environment

A Girl Guide is a manager and is conscientious

A Girl Guide is loyal and respects the property of others

A Girl Guide is useful and overcomes difficulties

A Girl Guide is pure in thought, word and in deed

? Did You Know

- If we could capture all the sunlight that falls on the earth in just **one hour**, we would have enough energy to power the whole world for **one year**!



MDG 7 IN TUNISIA



One of Tunisia's main environmental challenges is a lack of fresh water sources. Its water availability for each person is well below average for the Middle East and North Africa. To provide water for its population, agriculture and industry, large

numbers of dams are being built on rivers, changing the natural environment.

In some regions around the coast too much water has been taken from sources underground. This causes seawater to move into these areas, in a process called 'saline intrusion'. As a result, the groundwater becomes salty and unusable. Farming methods in Tunisia often cut down too much forest to make way for agriculture, thereby reducing habitats for animals and plants, and allowing overgrazing by animals. This causes the soil to have poor quality and to be washed away or removed (soil erosion) easily. Poor, eroded soils make farming even harder resulting in low wages and poverty.

Soil erosion and the lack of water are two causes for one of the most serious environmental threats in Tunisia and North Africa – desertification, where crop land is converted to desert. Climate change may also increase desertification. If the land lost could be used for farming, it has a cost to individual people and to the country. In Tunisia, this cost has been estimated at 100 million US dollars every year.



The universe is not required to be in perfect harmony with human ambition.

Carl Sagan, astronomer



ENVIRONMENTAL INDICATORS

- Only around **1 per cent** of land and marine areas are now protected as nature reserves
- **Nearly 62 per cent** of water sources are used to provide water for people, industry and agriculture
- **5 per cent** of people use solid fuels, such as coal, to heat their homes
- **94 per cent** of people have access to good quality drinking water
- Only **85 people** have access to basic sanitation
- Nearly **one in ten** people live in slums

To learn all about Girl Guiding and Girl Scouting in Tunisia, visit the WTD website.

HOW TO DONATE TO THE WORLD THINKING DAY FUND

Thank you for choosing to donate to the World Thinking Day fund. Your contribution will allow us to support girls and young women around the world.

Donations will be acknowledged by a letter and a special WTD certificate.

If your Girl Guide or Girl Scout group has raised money for World Thinking Day, please check if your national Association is collecting money from groups to send to WAGGGS for the WTD fund. However, if your Association isn't collecting donations or if you wish to make a personal donation please consider the methods below.

Girl Guide and Girl Scout groups or individuals donating directly

Have you raised money for World Thinking Day? You can donate the funds you've raised to the WTD fund in one of the following ways:

Donating by cheque

In the back of this pack is a World Thinking Day donation form. You can also download it from the website **www.worldthinkingday.org**. Complete the form and send it by post along with the cheque to:

WTD Fund, WAGGGS, Olave Centre, 12c Lyndhurst Road
London, NW3 5PQ, England

Remember to sign and date the form before sending it and make sure you have mentioned your name and the name of your local group and Association where appropriate.

UK tax payers only: remember you can make your donation go further with free help from the Inland Revenue by using Gift Aid - just check the relevant box in the Gift Aid section of the donation form.

Donating online

Donate online at www.waggs.org/en/donatetowaggs. Donating online is simple, quick and secure. Please have your credit card or bank details ready.

Remember to indicate that your donation is in support of World Thinking Day. You can do this by selecting 'World Thinking Day' in the 'Additional details' section of the online form.

Remember, there are plenty of fundraising ideas in this pack, suitable for most ages!

Other ways to donate

If the above ways are not convenient for you, please contact us directly to find out how we can help you make your donation. Get in touch with Paul Bigmore, Fund Development Manager at wtd@waggsworld.org or write to:

WTD Fund, WAGGGS, Olave Centre, 12c Lyndhurst Road
London, NW3 5PQ, England



Be the change you wish to see in the world.

Mahatma Gandhi

ADVICE FOR LEADERS



Thank you for choosing to work towards the World Thinking Day badge with your group.

World Thinking Day is a great opportunity to think about Girl Guides and Girl Scouts around the world and, as one Movement, to speak out and take action together to save our planet. Caring for the environment is something we can all contribute to and the benefits of a cleaner, greener and more sustainable world will be felt by every member of the Movement today and in the future. Make World Thinking Day your opportunity to help Girl Guides and Girl Scouts around the world by helping to save the planet we all live on.

The activities in this pack have been developed for Girl Guides and Girl Scouts of all ages, in many different countries. Some activities have been marked as more suitable for older or younger members but you know your members best; please use your own judgement to decide on the most suitable activities for your group. Some activities require the use of the internet or other resources you may not have access to but we have tried to ensure there is a sufficient range of activities to enable members in all international contexts to earn a badge.

Some topics may be more relevant to your members than others and you are in the best position to identify the most relevant activities. However, as this activity pack is part of our World Thinking Day celebrations, these activities are also a good opportunity to explore issues with your members that may not be directly present in their daily lives, helping them to understand better the realities faced by their Girl Guide and Girl Scout sisters in other countries.

“We have to shift our emphasis from economic efficiency and materialism towards a sustainable quality of life and to healing of our society, of our people and our ecological systems.”

Janet Holmes à Court, Australian businesswoman

WAGGGS RESOURCES ON ENVIRONMENTAL ISSUES

We hope that, by working towards the 2012 World Thinking Day badge, your members are inspired to do more to save the planet. There are many ways for Girl Guides and Girl Scouts to work on environmental issues and there are lots of WAGGGS resources to help you explore the theme in more detail, such as:

- Food Security and Climate Change challenge badge curriculum
- Biodiversity challenge badge curriculum
- Global Action Theme badge curriculum (section on MDG7)
- Climate change, take action now! (a guide to supporting the local actions of children and young people, with special emphasis on girls and young women)
- Right to Food - A Window to the World (a cartoon book and leaders' activity guide)
- Guidelines for WAGGGS Members to promote non-formal climate change education to decision-makers (a guide to support advocacy)

You can download all these resources on

www.waggs.org

ABOUT THE ACTIVITIES

This pack contains different types of activities.

- **“Get Moving”** activities are group games that introduce the topic. Use these to start conversations about environmental themes to help your members choose what activities they would like to try to earn their World Thinking Day badge
- The first three sections explore key aspects of environmental sustainability; we suggest that your members should choose **two** activities from **each** of these sections
- The fourth section supports your members to deliver WAGGGS’ environmental demands to decision-makers. We hope that the activities from sections one to three will inspire your members to speak out about environmental issues in the community so section four equips them to have the biggest impact possible. **One** activity which delivers WAGGGS’ demands to decision-makers is recommended to earn a badge. The following icons relate to different types of activities:



Speak Out!

from anywhere in the pack, or any activity you plan that delivers WAGGGS’ demands

- Where an activity is marked



Fundraise!

it includes an idea for fundraising for the World Thinking Day fund. Please tell your group about the fund and how it supports Girl Guides and Girl Scouts around the world



Celebrate!

activities are suggested to help your group really enjoy World Thinking Day and connect with your sisters around the world. You can use these ideas as part of your World Thinking Day events at any level

Pages also have tips for saving energy, interesting environmental facts and quotes from inspiring women and men who are working to save the planet.

MAKE YOUR ACTIONS COUNT!

We aim to reach **201,200 actions** by 31 August 2012

The World Thinking Day website gives your members a chance to make their mark by recording how many actions they have taken towards saving the planet. Every pound (£) donated or activity completed counts as one action and our target is **201,200 actions**.

Please encourage and enable your members to log their activities on the website so they can see what a huge impact Girl Guides and Girl Scouts around the world can have when they work together. There will also be a map on the website so your members can see how many countries are getting involved. In this pack there is also a cut out/ copy activity log you can use for individuals or your group to display in your meeting place.

www.worldthinkingday.org

“The packaging for a microwavable “microwave” dinner is programmed for a shelf life of maybe six months, a cook time of two minutes and a landfill dead-time of centuries.”

David Wann, author on sustainable lifestyles

✓ **Do Something Today**
Remember to take reusable bags to the shops and refuse plastic bags when offered

ABOUT THE THEME

What is environmental sustainability?

When something is sustainable, it can keep on going without running out of resources, like a circle. A sustainable environment can support everything that depends on it for life without using up resources, like forests and water, that can’t naturally be restored.

It’s up to us to protect environmental sustainability. All we have to do is

- **leave the world better than we found it**
- **take no more than we need**
- **try not to harm the environment**
- **make amends if we do**

Unfortunately, our use of the environment isn’t sustainable at the moment. Many of the world’s

environmental problems, such as climate change, can be linked to the fact that humans use more resources than the earth can provide. **Today, it takes the earth one year and six months to restore what humans use in a year¹.** We fill the gap by using up resources that can’t naturally be restored in our life time, like cutting down forests that will take hundreds of years to grow back and polluting the land and water, which kills plants and wildlife. This can’t continue forever. The only solution is to reduce the impact humans have on the planet to sustainable levels. By working towards a World Thinking Day badge you will explore ways of “treading lightly” on the planet and learn how you can make a difference to the environment.

Millennium Development Goals targets and indicators

The Millennium Development Goals (MDGs), are a set of eight goals that world leaders agreed in 2000 to try and tackle poverty from every direction by 2015. MDG 7 is the goal to ensure environmental sustainability. WAGGGS decided it was really important that Girl Guides and Girl Scouts contributed to achieving the Millennium Development Goals, so we launched our own Global Action Theme, “together we can change our world”, with one key message for each MDG. The seventh Global Action Theme message supports MDG 7 by saying “we can save our planet”. These are the targets the world is working towards for MDG 7, and some facts that show what progress has been made.



MDG GOAL 7: ENSURE ENVIRONMENTAL SUSTAINABILITY

- **Target 7.A:** Integrate the principles of sustainable development into country policies and programmes and reverse the loss of environmental resources
- **Target 7.B:** Reduce biodiversity loss, achieving, by 2010, a significant reduction in the rate of loss
- **Target 7.C:** Halve, by 2015, the proportion of the population without sustainable access to safe drinking water and basic sanitation
- **Target 7.D:** Achieve, by 2020, a significant improvement in the lives of at least 100 million slum dwellers

ARE TARGETS BEING MET?

- Some 1.7 billion people have gained access to safe drinking water since 1990. Yet 884 million people worldwide still do not have access to safe drinking water²
- The world has missed the 2010 target for conserving the diversity of plants and animals. Based on current trends, the loss of species will continue throughout this century³
- Slum improvements are not keeping pace with the growing number of urban poor. 828 million people are living in slums today and the number keeps rising⁴
- Tree-planting programmes and expansion of forests in some regions, add seven million hectares of forest annually around the world. Forests are still being lost but the rate of loss is falling⁵
- At the start of this century, global emissions of carbon dioxide (CO₂) again rose, reaching 30 billion metric tons by 2006. This is a 35 per cent increase since 1990 levels⁶

¹ www.footprintnetwork.org/en/index.php/GFN/page/footprint_basics_overview/

² UN Department of Public Information, September 2010

³ UN Department of Public Information, September 2010

⁴ UN Department of Public Information, September 2010

⁵ UN DESA, MDG Report June 2010

⁶ UN DESA, MDG Report June 2010

GET MOVING!

GROUP ACTIVITIES TO INTRODUCE THE WORLD THINKING DAY THEME

DRAW THE CHANGE

Prepare a list of simple actions we can do to save energy, such as stop using plastic bags. Divide the group into teams and give one person in each team paper and pencil, and whisper an action to them. When the leader shouts "Go" the person with pencil and paper should try to draw, without talking or writing words, the action. As soon as the team guesses correctly they shout "Stop" and their team wins a point. Keep going until all actions have been tried, with team members taking it in turns to draw.

SUSTAINABLE CHASE

This game works best outside over a large area. Prepare a pot of tokens such as small squares of card or painted pebbles. Divide your group into three groups; two equally sized teams (the green team and the brown team) and a smaller team of chasers. Mark two large circles as far apart as possible; the start and finish points. Put two pots in the finishing circle, one marked green and one marked brown. Station a leader in each circle. The chasers should spread out between the two circles.

Gather the green and brown teams in the starting circle and give everyone a token. When you shout "Go", they try to run to the finishing circle without being caught and drop their token into their team's pot, then return to the start and do it again. If a chaser catches someone from the green team, they should take them back to the starting circle. The green team member can then try again. However, if a chaser catches someone from the brown team, their token is taken away and they become a chaser. Over time the brown team will lose its members whilst the green team can keep running.

Stop the game after a set time and count up the tokens. Who won? Discuss the rules with the players; was it easier for the brown team or the green team, and why? Introduce the idea of sustainability and show how the rules made the green team sustainable, whilst when the brown team ran out of players, it could no longer succeed. Discuss how the concept of sustainability could be applied to the environment.

WHICH TO SWITCH

Ask everyone to write a "which to switch" question on a piece of paper. It should give two green ideas, such as "Which to switch, walk to school or turn down the heating?" Collect in the ideas then mark two bases, one at each end of the room. Gather everyone in the middle of the room and tell them that, when you read out a "which to switch", they should run to the first base if they would prefer to put the first idea into action or to the second base if they would prefer to put the second idea into action. Go through all the questions. Was it easy to decide which to switch?

GOOD AND BAD

Stand in a circle. The first person describes an action that is energy-saving and shows an action to illustrate this. For example "I use energy-saving light bulbs" mimes screwing in the light bulb. Everyone repeats the phrase and action. The next person says an energy-wasting action with a mime, such as: "But I take a bath not a shower". Everyone repeats both phrases and actions. This continues with energy-saving phrases beginning with "and...", and energy-wasting phrases with "but..." until everyone in the circle has said something and all the phrases have been strung together.

✓ **Do Something Today**
Fit a low energy bulb – it will have paid for itself in **six months**

? Did You Know

- It now takes the Earth **one year and six months** to regenerate what we use in a year.
www.footprintnetwork.org

CAN YOU DO BETTER?

Divide the group into teams of four or five. Groups should spread out around the meeting place. Each group is given an environmental situation then each group member makes up a character who might care about the situation. Two group members start to debate the issue, acting in character. At any point, other group members can shout "Freeze" and the two actors should freeze in their current pose. The person who shouted should then tap either actor on the shoulder and take up their pose (the previous actor goes and sits down) then starts the conversation again from the freeze point, but acting as their new character.

For example, the town is planning a rock festival in the local park. Some people can't wait, others are worried it will attract lots of cars, causing pollution, and will cause litter and damage to the park. Characters could include a teenager, dog walker, rockstar, local shopkeeper and doctor.

AIR, WATER, FIRE, EARTH!

Begin by deciding on a quick action or pose to represent each element. The group walks around in the room until the leader calls "Begin" and you must pair up with the person closest to you. Decide which element you will be, without telling your partner. The lead should count out loud, "One, two, three, go!" On "Go" everyone should strike a pose. Air beats water; water puts out fire; fire grows with air and therefore beats it. The winners continue to move around the room and the losers have to sit out. However, if the leader shouts "Earth" instead of "Go", all players should lie down as quickly as they can. The pair that lies down last must sit out. Keep going until only one player is left. Discuss why each element is essential for life.

FOUR CORNER QUIZ

Prepare a quiz with an environmental theme and multiple choice answers. Label each corner of the meeting place A, B, C or D. Ask the group to run to the corner which represents their answer. Sometimes, give them a chance to change their minds when they see how others have answered. Turn around slowly to build up the tension before revealing the answer by pointing to the relevant corner!

IN BALANCE

With an even number of people, stand in a circle and hold hands. Give everyone a number. Ask all odd numbers to lean in and even numbers to lean out on the count of three. They should keep their bodies straight, leaning from their ankles and remain holding hands. If done correctly, the circle should remain static, not pulling in one direction or another. Afterwards, discuss what the activity shows us about relying on each other. What happens if someone were to break the chain?

WHOSE HABITAT?

Stand in a circle with one person in the middle. This caller points to someone and calls "Earth", "water" or "air". The person must respond by saying the name of a living thing that lives in the named habitat, eg. "Earth" is called and the response might be "lion". If the player hesitates, she/he must stand in the middle and become the caller. Run the activity until everyone had played, or stop after a set time.

"The more clearly we can focus our attention on the wonders and realities of the universe about us, the less taste we shall have for destruction."

Rachel Carson, marine biologist



Climate change

Climate is the pattern of weather, including seasons, temperatures, rainfall/snowfall and extreme weather events such as hurricanes, blizzards or tornadoes. Our climate is changing because of the greenhouse effect.

The greenhouse effect is the name for a natural process by which the earth's atmosphere traps some of the sun's energy, just like a greenhouse. This keeps the earth warm enough for things to live. This process works because of certain gases, called greenhouse gases, which trap heat in the atmosphere, like wrapping the earth in a blanket.

However, the way we live uses lots of energy and results in too many greenhouse gases like carbon dioxide and methane being released into the atmosphere. That blanket is getting thicker, trapping more heat from the sun and causing the average temperature of the Earth to rise. This is causing our climate to change more quickly than it should.

Climate change is already causing...

- More frequent natural disasters and extreme weather
- Changing weather patterns causing drought in some areas, increased flooding in others
- Weather changes making farming harder and leading to famine
- Rising sea levels putting people who live on small islands and low-lying land at risk
- Melting ice sheets in Greenland and Antarctica
- Changing seasonal patterns affecting plants and animals

Climate change is affecting every aspect of how people live. It makes it harder to grow food, which makes people weaker and less able to cope with illness. Diseases carried by insects such as malaria can spread to new areas as changing temperatures and stagnant water left by floods create new places where they can live and breed. If climate change makes life too difficult, families may be forced to migrate away from their homes, disrupting their lives and making it harder to earn a living and continue with education. If we don't make a big effort to stop climate change, these problems will grow and spread.

? Did You Know

- Around **2.7 billion people**, almost half of all people in the world, rely on biomass (such as plant or animal matter, like wood) for cooking and heating. Burning biomass puts lots of CO2 into the atmosphere and breathing the smoke every day is very harmful www.sustainableenergyforall.org/about

GIRLS AND CLIMATE CHANGE

Girls and young women can be particularly vulnerable to the negative impact of climate change.

- In countries where water is not easy to find, women and girls, some as young as seven years old, are having to walk three times as far to find it
- Girls spending more time walking for water miss out on their education
- Girls and women walking long distances, often alone, face a greater risk of being attacked
- If meeting basic needs like food and water become harder, girls have to take on more household responsibilities and are forced to go out to work to help their family, preventing them from attending school
- When extreme weather strikes, girls and young women are less likely to leave the home to seek help, or to have basic survival skills like swimming or climbing

Girls and women are part of the solution. As half the population of the planet, they can't be left out of the picture. Girls and women spend more time with their families and see the problems of climate change first hand, so they are the best people to solve those problems and organize their communities. All girls and women can be leaders, and when girls and women take the lead, they can change their whole community.

“While none of us can do everything, each of us can do one thing. If each of us does one thing, we have the ability to create remarkable change.”

Robyn O'Brien, food activist

SECTION 1

REDUCE...

the use of fossil fuels when getting around

THE FUEL DEAL

Everything that moves needs energy. Our bodies need energy to keep moving so we eat food to create energy; food is our fuel. Today, it's not only people that need energy. We have created all sorts of machines like cars, factories, and buildings that need energy to function. We use the earth's natural resources to make the energy they need. Some resources, like power from the sun, wind or water, can be used again and again without running out. These are called renewable energy sources. But for a long time, most energy has been produced by burning coal, oil and gas. These are called fossil fuels, as they were formed from natural materials such as animals and plants that were buried for millions of years and changed, through heat and pressure, into fossil fuels. We dig up the fossil fuels and burn them to create energy.

Relying on fossil fuels for energy is a problem for many reasons.

- Extracting them from the earth is a destructive process
- Once reserves are used up, we cannot create more
- When we burn fossil fuels, we release carbon dioxide into the atmosphere causing the layer of greenhouse gases around the earth to get thicker and trap more heat from the sun, increasing the temperature of the Earth

One of the biggest uses of fossil fuels is for transport; moving people and products from A to B. Try to get away from fossil fuels by completing **any two** activities from this section.

“When we heal the earth, we heal ourselves.”

David Orr, environmental expert

✓ **Do Something Today**
Walk or cycle somewhere instead of taking the car



ACTIVITIES

Choose any two...

1 TAKE A (FOSSIL) FREE RIDE

Getting from A to B can take a lot of fossil fuels. Cut down your impact by using your feet or other low fossil fuel transport.

✧ Younger ✧

A Organize a “walking bus” to school or to your Girl Guide/Girl Scout meeting. Invite your friends to join you. Spread the word by making a cardboard ‘bus’ from old boxes, decorated with messages about using less fossil fuels, that you can wear on your walk.

✧ Younger ✧

B See how many **low fossil fuel transport ideas** you can think of. Whether walking, running, hopping or dancing your feet are your best friend, but there’s also bikes, rollerskates, surf boards, pedal carts, paragliding, wheelbarrows....can you think of more? Use them to draw attention to your message about reducing fossil fuel use.

✧ Older ✧

C  **Speak Out!**

Organize an event to **raise awareness** of how to travel more sustainably, such as a march or mass bike ride to demonstrate your commitment.

Use your low fossil fuel transport ideas to deliver your demands! (see section four). Plan a march to your decision-makers using as many low fossil fuel transport methods as you can.

✧ Older ✧

D  **Fundraise!**

Take part in a **sponsored 5k run** to raise money for the World Thinking Day fund.

Take it Further!

If there are no runs taking place in your area, why not **organize your own**?

“Man is a complex being: he makes deserts bloom - and lakes die.”

Gil Stern

2 STAY AT HOME, SEE THE WORLD

Travelling by plane uses a lot more fossil fuels than other forms of transport, but that doesn’t mean you can’t explore the world. With Girl Guides and Girl Scouts in 145 countries, try one of these new ways to learn about their lives.

✧ All Ages ✧

A Pick one of the 145 countries where Girl Guiding/Girl Scouting goes on and put together an imagined travel diary of your perfect trip – one that doesn’t rely on fossil fuels.

✧ All Ages ✧

B  **Fundraise!**

For World Thinking Day, organize a “world in a day” celebration. Research Girl Guide/Girl Scout activities from different countries around the world – perhaps one from each WAGGGS’ Region – and set up the activities around your meeting place. Invite other Girl Guide/Girl Scout groups to attend your celebration and give them a “passport” to record each activity they complete. Complete the event with celebratory activities and a collection for World Thinking Day.

Log your actions at

www.worldthinkingday.org

Share your actions and stories with other Girl Guides and Girl Scouts and help us reach our target of **201,200 actions** by 31 August 2012.

? Did You Know

In Latin America and south-east Asia, **100 per cent** of people living on less than one US dollar a day are exposed to indoor air pollution from the burning of fuels like wood and charcoal. In Bangladesh, **95 per cent** of the population relies on such fuels for their energy needs

? Did You Know

In just one day, women around the world spend more than **200 million hours** collecting water

3 FOOD PASSPORT

It’s not just people who use lots of fossil fuels to get around. Lots of the food we eat has travelled a long way to end up on your plate; even something like an apple could have been grown in one country, washed in a second, packaged in a third then shipped to your local shop. Choosing locally produced foods with low “food miles” is a small action that can make a big difference to your impact on the environment.

✧ All Ages ✧

A



Celebrate!

Organize a **local food picnic** to celebrate World Thinking Day, where everyone brings a dish of locally sourced food to share.

✧ Older ✧

B



Fundraise!

Organize a **meal for the local community** using only local produce. Promote your event in the local community and sell tickets to cover your costs and raise money for the World Thinking Day fund.

✧ All Ages ✧

C On World Thinking Day, commit to only eating **locally produced food**. Of the products you try, identify which ones you can eat regularly in the future. Encourage your family and friends to join in!



Do Something Today

When you pick up fruit or vegetables, check where they have come from and choose the product that has travelled the least

ECOLOGICAL FOOTPRINT*

* a measure of human demand on the Earth’s ecosystems

One way to work out the impact of your life on the planet is to calculate your ecological footprint. There are lots of online calculators to help you work out your impact, and here are two good ones.

www.footprintnetwork.org/calculators

This calculator does not work for all countries, but is a fun and easy calculator to use. If your country is not on there, try using the country nearest to you to give you an idea of how it works.

www.carbonfootprint.com/calculator.aspx

This calculator is a bit more complex but will be more accurate as it works for more countries.

4 THE COST OF MEAT

By **eating less meat** you can make a real difference to your environmental footprint. Rearing animals for meat takes a lot more energy than growing grains and vegetables. The amount of carbon dioxide released by producing one kilogram of beef is the same as an average car produces by driving 250 kilometres, and the energy it costs to produce that beef could light a 60 watt bulb for more than a month. More than half of the crops grown in the world are fed to animals, most of which will be killed for meat. Cows are also one of the greatest emitters of methane, the second most significant greenhouse gas.

✧ All Ages ✧

A Research nutritious alternatives to meat. Could you realistically go without meat for a day?

Take it Further!

Commit to one meat-free day every week, using alternative sources of protein to keep your diet balanced.

✧ All Ages ✧

B Cook a healthy meat-free meal to share with your family and friends.

5 BREAK IT DOWN

It's very easy not to think about the impact that producing our favourite things has on the environment.

✧ All Ages ✧

A Take one product – a favourite food, item of clothing, gadget or toy, and try to map its life cycle, from getting the raw materials to manufacture, packaging and transportation. How do you think fossil fuels were used at each stage of production?

✧ Older ✧

Take it Further!

B Work out the life cycle for some common products and **develop a game** to raise awareness of the topic amongst younger Girl Guides/Girl Scouts in your area.

6 LOW FUEL FLASHMOB

✧ All Ages ✧

Working in groups, **prepare a show** (dance, sketch, song) that presents tips for reducing fossil fuel use in an entertaining way and perform it to a local Girl Guide/Girl Scout unit.

Take it Further!

Arrange to **perform your act** in your local community to mark World Thinking Day. This could be at your school or in a public space (ensure you have permission from your school/local council to do so). Adapt your act to make an **effective flash mob*** that surprises passers-by and attracts attention – you may need to involve more people in your group to do this effectively. Speak out and use your performance to attract attention and invite decision-makers, then finish your show by delivering your demands (see section four).

* A flashmob is when a group of people assemble suddenly in a public place, perform their act and then disperse.

YOU MAKE THE DIFFERENCE

If there is one message in this activity pack, it is the importance of understanding the impact we have on the environment. So many environmental problems are caused by simple choices we make about how to live. One person may seem like a drop in the ocean when you think about how big the world is. After all, if one person switched off a 60 watt light bulb

7 MUSCLE POWER

✧ All Ages ✧

List the household and garden chores that you could undertake without using fossil fuels. For example, sweeping instead of a vacuum cleaner or raking up leaves instead of using a leaf blower.



Fundraise!

Offer to do these chores for a small fee and use the money raised to support the World Thinking Day Fund.

8 PEDAL TOGETHER

✧ All Ages ✧

Organize a bike sharing scheme to encourage other Girl Guides/Girl Scouts and members of your local community to get pedalling. Learn how to maintain bikes and ask your family and friends to donate any old/unused bikes to the scheme.



Fundraise!

Charge a small fee for bike hire and donate profits to the World Thinking Day fund.

9 AND THE WINNER IS...

✧ Older ✧

Organize a race along a common journey route at rush hour, such as from the outskirts of the city to the centre, using a range of different modes of transport. Involve your local media and use social media to track the race and use the event to raise awareness of the fastest way to beat the queues of traffic, and the environmental benefits of low-fossil-fuel transport.

Don't forget, you can log on to the World Thinking Day website to find out how you can donate, or to donate online, log onto www.waggs.org/en/donatetowaggs.

for one hour, it would only reduce carbon dioxide emissions by 0.4 grams. However, by October 2011 the United Nations predicts the global population will reach 7 billion. If one quarter of the people on the planet right now made the same decision, over 150 thousand metric tonnes of CO2 would be saved; that's like switching off 200 average sized coal power stations for an hour. Talk about impact!

SECTION 2

SAVE... resources in and around your home

SWITCH IT OFF, GREEN IT UP

There is a lot we can do to make our homes and local communities cleaner and greener places to live. These activities will help you decrease the impact you have on your local environment, saving valuable energy and other resources. The more Girl Guides and Girl Scouts take action to make their communities environmentally sustainable, the more we can encourage others to do the same. By reducing the resources we use, finding creative ways to recycle and reuse resources and making the local environment greener, we can save energy and reduce the amount of greenhouse gasses in the atmosphere.

ACTIVITIES

Choose any two...

1 GET OFF THE GRID!

Saving electricity is one of the simplest and most powerful things you can do to save energy.

✧ All Ages ✧

A Design a poster giving your top ten tips for saving electricity then spread the word! Display it everywhere you can; in your meeting place, your school or email it to your friends and family.

✧ Younger ✧

B Design and make "switch me off" notes to display next to taps, light switches and plug sockets at home, school and your meeting place.

✧ All Ages ✧

C Take part in Earth Hour. At 8.30pm local time on the 31 March every year, the lights go out in over five thousand cities and towns worldwide. For that one hour, Earth Hour, go "off the (electricity) grid" and save energy. Make a pledge to raise awareness about the campaign between World Thinking Day and Earth Hour and encourage your community to take part.

✓ **Do Something Today**
Switch off the light when you leave a room!

✧ All Ages ✧

D



Fundraise!

Design an evening programme for your Girl Guide/Girl Scout group that does not require electricity to run on World Thinking Day. Invite guests and ask them to make a small contribution to the World Thinking Day fund. Write a song or rap about saving electricity and perform for your group.

Take it Further!

Why not try living **off the grid** after 8.30pm every evening for a week or longer?



Fundraise!

Get sponsored for going off the grid for a set period of time and donate the funds raised to World Thinking Day

2 SWAP IT OUT, GLAM IT UP

✧ All Ages ✧

A Think you need some new clothes? Instead of buying more, organize a **clothes-swapping party** and invite all your friends to bring unwanted clothing and swap it for a new look.

Take it Further!

✧ Older ✧

B Learn how to recycle old clothes – simple sewing techniques can update your clothes and make them feel new again, without putting any extra strain on the planet. Ask someone in the local community who can teach you basic sewing skills, then teach your friends by having a clothes recycling corner at your swapping party.



Fundraise!

Combine your swapping party with a recycled fashion show and charge a small admission fee for the World Thinking Day fund.

? Did You Know

- More than **1.4 billion people** across the world have no access to electricity, and another **1 billion** only have access sometimes.
www.sustainableenergyforall.org/about



“It is the worst of times but it is the best of times because we still have a chance.”

Sylvia Alice Earle, marine biologist

Log your actions at

www.worldthinkingday.org.

Share your actions and stories with other Girl Guides and Girl Scouts and help us reach our target of **201,200 actions** by 31 August 2012.

3 MAKE IT NEW

There are countless creative ways to recycle materials and reduce waste.

✧ All Ages ✧

A Learn basic sewing skills then turn old clothes and scraps of fabric into new products you can sell. Simple projects such as making cushion covers are easy to learn and quick to make.

✧ All Ages ✧

B Best of all, recycle old fabric into cloth bags, decorate with messages about the environment and distribute them in your local community to discourage the use of plastic bags.

✧ All Ages ✧

C Papier mâché (French for “chewed paper”!) is a great way to recycle old paper, card and other materials into... well, pretty much anything! How about making a papier mâché sofa for your meeting place or bowls, stools and tables to sell? It's very simple and lots of fun.

- Create a frame for what you want to make using recycled materials, such as toilet roll middles taped together to make legs, a flat piece of cardboard shaped to make a table top, wire to make frames
- For bowls, find something that gives the round shape you want, such as a football or another bowl. Cover this in cling film or waxed paper to stop the papier mâché sticking to the shape
- Make a thin paste using flour and water (if you heat this until it turns clear it is more effective) and tear newspaper into small strips
- Dip newspaper strips into the paste and smooth onto your frame
- Build up a few layers then let it dry and test for strength, adding more papier mâché where necessary
- Paint with a white base coat then decorate
- Finish with a few coats of varnish to protect it

4 PLANT FOR THE PLANET

Growing plants is a great way to make your local community a greener place. Plants improve air quality, reduce soil erosion, retain water, create nutritious fruit and vegetables and make everyone happier!

✧ All Ages ✧

A Organize a **group tree planting** in your area. Seek advice from a local expert on the best type of tree to use and where they will grow well. Identify an area that would benefit from the trees, ask local businesses to donate the trees and invite local media to your tree planting ceremony.



Speak Out!

Use your tree-planting event to deliver your demands from section four.

✧ Younger ✧

B Experiment with **growing plants in recycled containers**. You could plant herbs in tin cans, grow cress in old eggshells or salads in empty milk cartons.

Take it Further!



Fundraise!

Set up a **plant shop** as part of your World Thinking Day celebrations and contribute the money raised to the World Thinking Day fund.

✧ Older ✧

C Plant and care for a World Thinking Day **recycled garden** to benefit your local community. This could be a vegetable garden with the produce going to local food banks or charities for distribution, or sold to raise funds for the World Thinking Day fund. You could also create a sensory garden for people with special needs or a play garden for children – think about what your community needs the most.

D Are all the outdoor spaces in your community being used? **Guerrilla gardening** is a popular way to reclaim unused land – that might be a dusty patch of soil by the road, the bottom of the school playing field, even a bare rooftop; anywhere you can find! Persuade the land owner to let you care for it. Think about the best type of plants for the land; maybe grass or moss is best for a small patch of soil or a rooftop, whilst you can grow vegetables on the school playing field. Think ahead – if you plant something, you need to take care of it.

BE A GREENER GARDENER!

- Water your plants early in the morning or in the evening, to stop the warmth of the sun evaporating the water before it has a chance to sink in
- Some plants need more water than others. Research what plants suit your climate – look around your community to learn what grows well
- Use a watering can, not a hose, and direct it at the roots of your plants. Don't water bare soil
- Cut the bottom off a plastic bottle and take off the lid, then bury it next to any plants that need lots of water. You can fill the bottle and the water will trickle down straight to the roots
- Mulch! That means protecting your soil from direct sunlight to keep the water where you want it – in the soil. It also helps keep weeds away. Cover the soil around your plants with woodchips, compost, straw, gravel, sand or broken-up rubber tyres.
- Turn food and garden waste into compost to fertilise your plants
- Watch for where water runs off your roof when it rains, and put a large container there to collect it
- Save washing water to water the garden (unless you have used strong detergents)

Don't forget, you can log on to the World Thinking Day website to find out how you can donate, or to donate online, log onto www.waggs.org/en/donatetowaggs

✓ **Do Something Today**
Draw the curtains as soon as it is dark and keep the warmth in the house

“When spider webs unite, they can tie up a lion.”

Ethiopian Proverb

5 FOR THE BUTTERFLIES OUR CABAÑA ACTIVITY

World Thinking Day is a very special time at Our Cabaña, the WAGGGS World Centre in Mexico. Each year, millions of Monarch Butterflies migrate to spend the winter in Mexico. If you are lucky enough to be at Our Cabaña for World Thinking Day, you get to climb through the mountains to see the butterflies clinging to the trees. However, the Monarch Butterfly is in trouble because trees are being cut down in the forests where they live.

❖ All Ages ❖

A Research the diversity of wildlife in your area, and plant trees and bushes that attract native insects and butterflies. Dedicate your planting to World Thinking Day and the Monarch Butterfly.

❖ Younger ❖

B

Celebrate!

Make World Thinking Day cards with a Monarch Butterfly design, and write about why we shouldn't cut down trees inside. Take a photo of your card and put it on the World Thinking Day website.



SAVE OUR FORESTS!

Cutting down trees is a big problem worldwide.

- Trees help to maintain the atmosphere by removing carbon from the air and releasing oxygen, so fewer trees means more greenhouse gases in the atmosphere
- Tree roots also hold the soil together. Cutting down trees causes erosion
- Forests are a habitat for millions of different types of wildlife
- We are losing many plant and animal species every day because we are cutting down the rainforests, including species we don't even know exist in the rainforests

The youth of the world should have standards and ideals in common.

Juliette Gordon Lowe

6 UP YOUR STREET

❖ All Ages ❖

How well do you know your local environment? With your group, explore and map your local area then identify environmental gold stars (such as clean community water source, public garden) and bad spots (such as litter dumping spots, neglected footpaths, bad air quality). Try to think of creative ways to promote and protect your gold stars and see what you can do to improve the bad spots.

Take it Further!

Design and create an eye-catching display, using recycled materials, to show your findings and display it in the local community. You could also take photos of the gold stars and bad spots and turn them into a photo exhibition to raise awareness of the issues.

Log your actions at

www.worldthinkingday.org

Share your actions and stories with other Girl Guides and Girl Scouts and help us reach our target of **201,200 actions** by 31 August 2012.

7 ENERGY AUDIT

❖ All Ages ❖

Keep a record of the amount and type of energy your family uses in your home for one week. Plan how your family could use energy more efficiently. Share your ideas with your family and decide which changes to make.

? Did You Know

- In 2012, **one billion people** will be able to stream music and videos on their mobile phones.
- **884 million** still lack access to clean water.

8 POWER RANGERS

❖ All Ages ❖

If possible, find an electronic energy monitor to test how much electricity different appliances use at your home, meeting place or school. Make recommendations for how to save energy and list the top three ideas. Design 20 postcards including this information and give them to your friends, Girl Guiding/Girl Scouting leaders or teachers.

Take it Further!

Encourage your school to establish regular energy monitoring. Get students volunteering to check classrooms for best energy saving practices eg: not leaving devices on standby, closing windows, turning out lights.

SUSTAINABLE BEHAVIOUR CHANGE

When you're working on environmental issues, the big picture really matters. What if you have to drive 10 miles to recycle an aluminium can? Or your local food picnic creates three bags of rubbish, most of which can't be recycled? Everything we do has a knock-on effect, and it's possible when organizing your activities that you could accidentally do something which cancels out the positive steps you've taken. Perhaps you start turning off your lights more but then spend the money you've saved on products that cost lots of energy to make.

Sustainable behaviour change is all about seeing that big picture. Every time you plan an activity, take five minutes to think how your choices in every area of your life add up. Watch out for the knock-on effects your actions might have and check the changes you make keep adding up to a greener planet.

✓ **Do Something Today**
Clean green – sweep the house,
do not use a vacuum cleaner

? Did You Know

- Approximately **one in eight people** do not have access to a safe water source.

9 EASY RECYCLING OUR CHALET ACTIVITY

Our Chalet is WAGGGS' oldest World Centre, high up in the Swiss mountains. It is a great place to see how beautiful the environment can be if we take care of it. The Our Chalet team knows it can make a difference by taking small steps to protect the environment so they provide plenty of recycling containers to make it easy for guests to sort their rubbish and recycle as much as possible. Take care of your environment by being better recyclers!

❖ All Ages ❖

A Find out what can be recycled in your area then design a set of recycling and composting containers to make it easy for people to remember what they can recycle. Think about how to make them easy to use, store and clean. Make the containers from recycled materials and decorate them attractively.

Take it Further!

Make more sets and distribute them in your local community.

❖ All Ages ❖

B Try the Our Chalet recycling game with a group of younger Girl Guides/Girl Scouts to teach them about sorting rubbish. Put together a sack of different types of rubbish (check the rubbish is clean) and, using your new recycling containers, time participants to see how quickly they can sort the rubbish into the right containers. The team that completes the game most quickly and accurately, wins.

10 GIVE IT UP

❖ All Ages ❖

How hard is it to give something up? Think of something you could give up and calculate what it would mean for the environment if you gave it up for a whole month. Try to live without it and keep a record of your experience.



11 BAG IT SANGAM ACTIVITY

Sangam, WAGGGS' World Centre in India, works with many community organizations so visitors can learn what living in India is really like and contribute to exciting community projects. Recycling is really important in India and inventive ways to make something new from something old are always popping up.

Many cities in India have banned the use of plastic bags. Staff and volunteers at Sangam have been learning how to make bags out of old newspaper to use for shopping.

Support the step away from plastic bags. Try to make your own newspaper bags using the instructions on page 50 or watch the video instructions at www.newspaperbagproject.com.



THE PLASTIC BAG PROBLEM

"The average plastic carrier bag is used for five minutes, but takes 500 years to decompose. DEFRA, the UK's Department for Environment, Food and Rural Affairs.

Around 500 billion to one trillion plastic bags are used around the world each year. That is enough to circle the Earth almost 36,000 times! Plastic bags represent a huge environmental problem as many are not recycled and just end up in landfill. Plastic bags are also one of the most common types of litter and are a threat to animals on land and in the sea. They also come from a non-renewable source. Plastic bags are made of polyethylene, which comes from natural gas – a fossil fuel.

Many countries are taking action to stop the use of plastic bags. More than 25 per cent of the world has either restricted or completely banned plastic bags. Countries banning thin plastic bags completely include Bangladesh, China, Italy, Kenya, Rwanda, Somalia, South Africa, Tanzania, Thailand, Uganda and parts of India. Many other countries now charge for or tax the use of plastic bags.

Switching to reusable bags can make all the difference. If just 1000 people in your community started using reusable bags regularly it would save one million plastic bags every year.



Fundraise!

Try selling your bags and donating the profits to the World Thinking Day fund!

Don't forget, you can log on to the World Thinking Day website to find out how you can donate, or to donate online, log onto www.waggs.org/en/donatetowaggs

SUSTAINABLE DEVELOPMENT

People in developing countries have the right for their countries to develop. The right to development is a recognised human right, yet the development of a country will lead to increased greenhouse gas emissions. How can this human right be protected without increasing the environmental problems that are causing climate change? Sustainable development is the answer. Sustainable development is when people have enough resources to develop, without using up resources that future generations need. Developed countries need to take the lead in creating less CO2 and support developing countries to make it easier for them to do the same.

SECTION 3

SWITCH... to sustainable energy solutions

MAKE THE CHANGE

Sustainable energy is about using energy wisely without wasting it, and making sure we have enough energy to use today and in the future without damaging the planet.

One important step is to switch to using renewable energy sources. There are some great alternatives to burning fossil fuels to create energy. Renewable energy comes from natural resources such as sunlight, wind, rain, tides and the heat from the earth. Renewable energy sources are all around us and however much we use these sources they won't run out. Every day people are finding creative new ways to capture and use renewable energy. Use the activities in this section to explore the possibilities of renewable energy and come up with your own sustainable energy invention!

ACTIVITIES

Choose any two...

1 FUEL-FREE FUN

✧ Younger ✧

A List your favourite games and activities that require electricity or fuel. Remember that even making products, like paper or pens, uses energy. What could you do instead that does not need any resources? Can you think of games that just need you and a few friends to play them? Try some out.

Take it Further!

Try making toys that use sustainable energy sources, such as pinwheel turbines (see the pattern on page 52), wind up cars, elastic band propellers or kites. Research different toys and experiment with their designs; can you use recycled materials to make them?



Do Something Today

Brush your teeth using a small cup of water, not the running tap

*"There are no passengers on
Spaceship Earth. We are all crew."*

Marshall McLuhan, media scholar

2 CELEBRATE WORLD THINKING DAY ON THE AIR

✧ All Ages ✧

Take part in this global meet-up of Girl Guides and Girl Scouts using the power of radio! Use a solar powered or wind-up radio to make contact and tell Girl Guides and Girl Scouts around the world about how you are contributing to MDG 7 and celebrating World Thinking Day

www.guides-on-the-air.co.uk

? Did You Know

As a result of projects in Burkina Faso, Mali and Senegal to roll out **600** sustainable, rural agro-enterprises providing electricity for lighting and grinding grain, women save between **two to six hours daily** on domestic chores.

3 CATCH THE WIND

❖ All Ages ❖

Make a colourful windsock to decorate your home and learn more about how windy your area is. You will need: wire/wire coat hanger/pipe cleaners, rectangle of fabric roughly the size you want your windsock, lengths of ribbon, needle, thread, pins.

You can make your windsock any size, but check that the long edge of your fabric rectangle is about the same length as your piece of wire.

- Lay out your fabric with the back of the fabric facing you
- Fold over one of the long edges by about two centimetres and pin down
- Sew down the folded edge to make a seam, and feed your wire through it
- Fold over the other long edge in the same way and pin down
- Pin ribbons along the second seam, their long tails facing away from the fabric. You can use as many as you want, at whatever length you want
- Sew along the second seam, sewing over the ribbons to hold them in place
- Fold your windsock in half with the back of the fabric facing outward and pin the short edges together then sew down the short edges



- Bend your wire to shape the windsock into a circle
- Cut one more ribbon to make a handle. Sew the ends to either side of the top of your windsock (the edge with the wire)
- Turn the windsock inside out – it's ready to fly!

Put your windsock somewhere high outside and observe how it moves at different times of the day. Keep a diary of the direction and force of the wind by checking your windsock.

4 HOW GREEN IS YOUR PACKAGING?

❖ All Ages ❖

Save some examples of packaging and bring to your group meeting. Examine the packaging and discuss with your group what are the most energy intensive types of packaging to produce, what alternatives could be used and think of actions you could take to encourage retailers to reduce the packaging of their products.

Take it Further!

Design your own eco-friendly packaging for one item and make a sample.

5 GREEN INVENTOR CHALLENGE

❖ All Ages ❖

Can you invent something that could change the world? Set up an invention competition for Girl Guides and Girl Scouts in your area. Invite the Girl Guides/Girl Scouts to form small teams and come up with a new invention based on sustainable energy solutions, or an idea for making the world a bit greener. Organize a panel of judges and hold a competition evening when each team can pitch their ideas.

Take it Further!

Set up an environmentally-friendly business based on your learning!

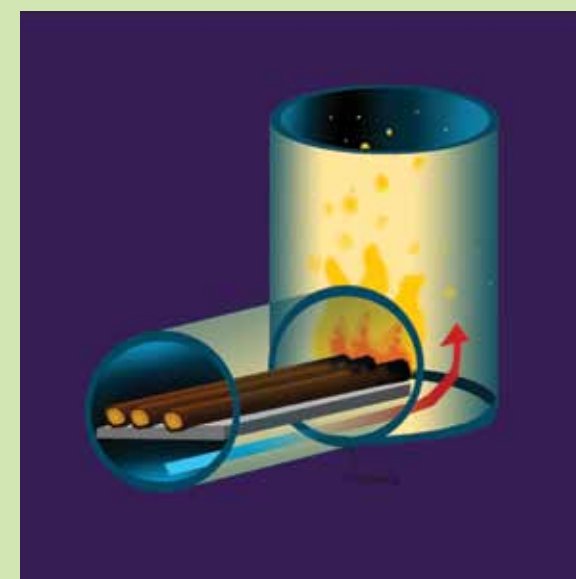
6 UNDER THE SUN

❖ Older ❖

In many countries with long hours of sunshine, solar cooking can save time and energy. Instead of having to gather wood every day or breathe in smoky air, families can use the power of the sun to cook their food; a safer, cleaner alternative that is also good for the environment as it does not release carbon dioxide into the air. Even if you have an electric or gas cooker, why not try cooking with the sun on a hot day? There are lots of different ways to make a solar cooker. See page 48 for instructions to make one of the more popular designs.

COOKING CHALLENGES

It is not just the atmosphere that is endangered by burning fuels. Cooking over an open fire or basic cooking stove pollutes the air with smoke. Because it is often women and girls who cook every day and spend more time in the home, they suffer more from the health problems caused by breathing polluted air. Solar cooking is a good alternative, but it takes a very long time for a meal to cook using a solar cooker, making women feel that they cannot take time for other needs like resting, education or health care. And there's a more basic problem – what happens if you live in a country where the sun does not shine strongly every day of the year?



? Did You Know

- Energy saved from recycling **one aluminium can** will power a TV for **three hours**.

Log your actions at

www.worldthinkingday.org

Share your actions and stories with other Girl Guides and Girl Scouts and help us reach our target of **201,200 actions** by 31 August 2012.

Help to create a better world and a brighter future for the youth of tomorrow.

Olave Baden-Powell

Luckily, alternative cookers that reduce air pollution and burn fuel more efficiently have been designed. This makes homes healthier, releases fewer greenhouse gases into the atmosphere and reduces the cost of fuel or amount of wood that needs to be collected.

❖ All Ages ❖

Case Study: Patsari Stove

One very successful cooker design is the Patsari Stove. In rural Mexico, about 95 per cent of families cook with wood on open fires, using an unsustainable amount of wood from the surrounding areas and leading to lots of health problems. The Mexican Government encourages families to change to cooking on gas, as this is cleaner, but most families cannot afford to. GIRA, (a non-governmental organization based in Mexico, working to improve environmental sustainability) worked with families to develop the Patsari stove. It has a chimney to take smoke out of the kitchen, uses special chambers to increase efficiency and reduce the amount of wood needed, and can be built locally. Using the Patsari stove reduces indoor air pollution by 70 per cent, halves the amount of wood needed, and reduces smoke-related health problems by 30 per cent.

❖ Older ❖

Build a Rocket Stove (see left)

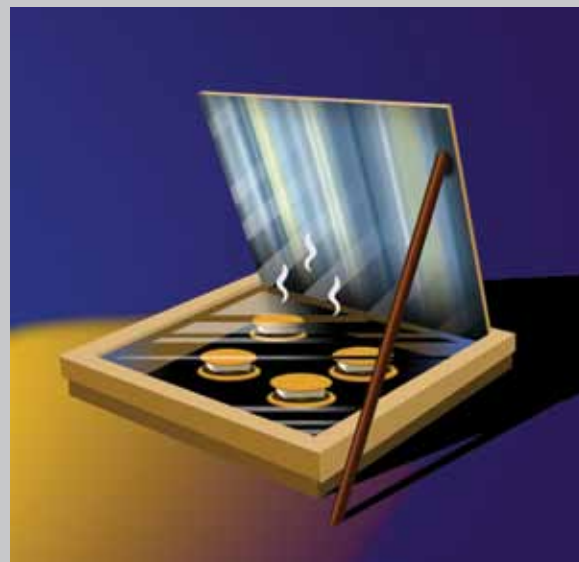
There are lots of different designs for more efficient, low-smoke cooking stoves. Try building your own rocket stove, one of the simplest designs that can be made out of recycled materials. Rocket stoves burn wood at the tip and draw air into the chimney, giving a very hot and low-smoke fire.

7 SOLAR S'MORES

✧ All Ages ✧

Try making s'mores using only the power of the sun. You will need: pizza box/similar shallow cardboard box, aluminium foil, thick sheet of clear plastic, scissors/craft knife, glue, black paper, sticky tape, a stick to hold the lid up.

- Measure three centimetres in from the edge of the box lid all the way round and draw a square.
- Cut the top and sides of the square to make a flap, fold upwards along the uncut side.
- Glue aluminium foil, shiny side out, to the bottom side of the flap, smoothing out any wrinkles
- Glue another piece of foil inside the bottom of the box and up the sides
- Tape black paper on top of the foil
- Tape the clear plastic to the underneath of the lid to seal the hole made by the flap
- Put your crackers inside the box and top half with a square of chocolate, half with a marshmallow
- Put your mini oven in direct sunlight, shut the clear lid tightly and use the stick to prop the flap open toward the sun
- Leave in the sun until the chocolate is melted and the marshmallows are gooey.
- Scoop out the sticky treat, sandwich between two sweet crackers and enjoy!



✧ Younger ✧

You can also try making solar s'mores using a glass dish with a glass lid.

8 LIGHT IT UP

✧ All Ages ✧

Using energy-saving light bulbs is a simple and effective way to save energy and money. It should not be too hard to persuade your family to use energy-saving bulbs to replace old ones when they stop working. So what's next?

A Design a poster to promote switching to energy-saving light bulbs and display in your meeting place and local community. Email your poster design to your friends to encourage them to start using energy-saving light bulbs too.

A LITRE OF LIGHT

Great ideas do not need to be complicated. In the Philippines, millions of families live in darkness. They have limited electricity and their houses often have no windows, making them dark even in daytime. The MyShelter Foundation found a brilliant solution: solar lights - made from plastic bottles! Recycled plastic bottles are filled with water and a little bleach (to keep the water clear) then fitted half way into a ceiling. The water refracts light from outside and glows with as much power as a 55 watt bulb. This project, called "A Litre of Light", aims to brighten up one million homes in the Philippines by 2012.

? Did You Know

- One wind turbine can produce enough electricity to power **300 homes**.



9 SUSTAINABLE PARTY

✧ All Ages ✧



Celebrate!

Organize a special evening, event or camp to celebrate World Thinking Day, and consider how you can minimise the environmental impact of the celebrations and use sustainable energy solutions where possible. Tell other Girl Guides and Girl Scouts about your activities through the World Thinking Day website.



Do Something Today

Do not toss your clothes in the wash after one wearing. Hang them up so they air and wrinkles disappear

Whatever befalls the earth befalls the sons of the earth. If men spit upon the ground, they spit upon themselves.

Native American Wisdom

10 BADEN-POWELL COOK-OUT PAX LODGE ACTIVITY



Pax Lodge, the WAGGGS World Centre in London, is a great place to visit if you want to see where the Movement all began. One favourite activity for Pax Lodge guests is visiting Brownsea Island, where the first ever Scout camp took place. Lord Baden-Powell taught his Scouts how to survive in the wild, so try this activity to reconnect with your Girl Guide/Girl Scout roots! Cook a meal with your group using only natural materials as utensils – that means no washing up and no paper plates being thrown away! Experiment with what you can find in your natural environment that is safe to use when preparing food such as coconuts, banana leaves, shells, sticks and stones. Check with your group leader that what you find is safe as some plants are poisonous or not safe to use in food preparation. If in doubt, do not use it.

WATER SECURITY AND SANITATION

Water and life go together. Everyone needs safe water to survive, but many people have to struggle every day to get the water they need – and even then, it may not be clean. Almost one billion people do not have access to a safe supply of drinking water.

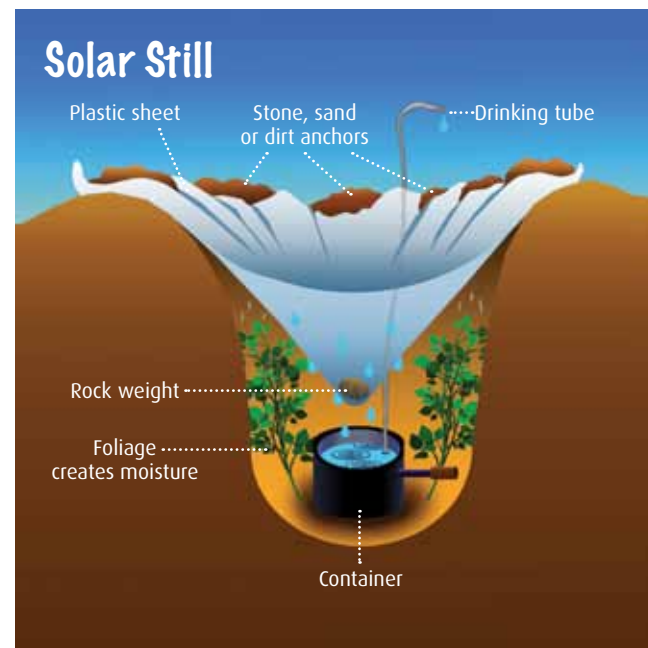
Unclean water can carry diseases such as cholera. Two million people die every year because of unsafe water. Harmful chemicals can also hide in water and cause serious illness.

It is often girls and women who have to collect water for their families. The journey to fetch water make take hours, using up time that could have been spent on other important activities. For girls, it can take such a long time to do basic tasks like fetching water or preparing food they may not be able to go to school. Children are also more likely to die from water-borne diseases.

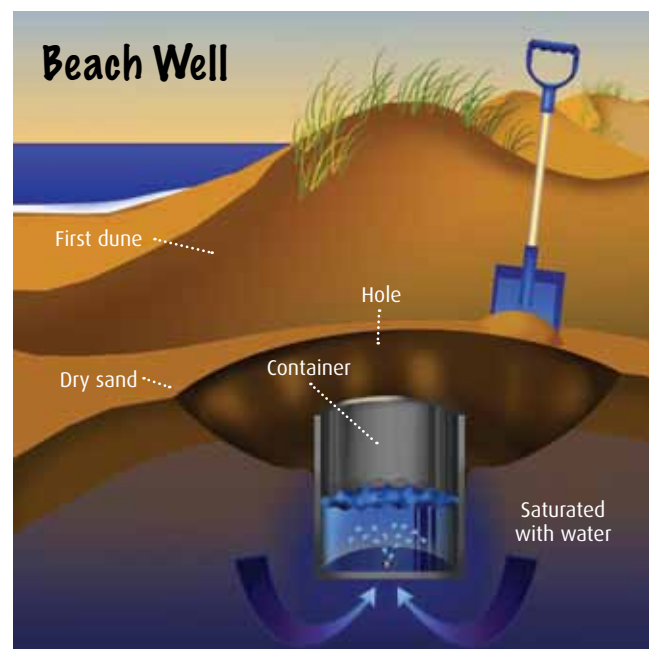
11 WAYS WITH WATER

✧ All Ages ✧

What if you do not have water on tap? Water is one of the most precious resources in the world, but it is not always easy to find. Try some of these methods for collecting and filtering water.



Once you have collected water, you must purify it before drinking as many dangerous bacteria can live in water. First, try this homemade water filter to clean the water, then purify either by boiling for at least 10 minutes or using a purification tablet. If you are not sure about the quality of the water, do not drink it.



- A** Measure how much water you can gather using these methods.
- B** If you were relying on water collection methods like these, how would it change your life? Produce a leaflet or diary extract exploring how your life would be different.

12 CROWDSOURCING

✧ ONLINE – Older ✧

Find out about crowdsourcing – a method of asking millions of online users to help with research projects and see if there is an environmental project you can contribute to. Research the pros and cons of crowdsourcing and prepare a talk for your group.

THE POWER OF CROWDS

Crowdsourcing is a simple way of using the internet to share ideas and knowledge, but it can be a powerful tool to help change society for the better. In Kenya, a group of bloggers worked out how to use crowdsourcing to tackle social problems such as violence following the 2008 elections. They set up an online space where people could contribute information about the crisis and track how the violence was spreading. In 2011 they are launching a new project, Huduma (Swahili for service). People can send reports on how good education and health services are in their area by text, email or Twitter. These reports will be mapped on the Huduma site so people can compare areas and learn about local services.

When we plant trees, we plant the seeds of peace and seeds of hope.

Wangari Maathai, 2004 Nobel Peace Prize Laureate



IS IT FAIR?

Climate change is the greatest humanitarian challenge facing mankind today. And it is a challenge that has a grave injustice at its heart. It is the major developed economies of the world which contribute the overwhelming majority of global greenhouse emissions. But it is the poorer and least developed nations that are hit hardest by its impact.

Kofi Annan, United Nations Secretary-General (1997 – 2006)

Climate change is not just a fear for the future – it is already happening and, as the world gets warmer, the problems caused by climate change are growing. Climate justice looks at climate change from a human angle, considering ideas of justice such as equality and human rights. Climate justice is about understanding that the people who contributed least to the problem are suffering the most from its consequences. Communities in developing countries and with low incomes are less responsible for greenhouse gas emissions yet are experiencing the most problems as a result of climate change. They may also lack the resources needed to deal with these problems.



SECTION 4

SPEAK OUT...
to make a difference

TEN MILLION GIRLS, ONE VOICE

Congratulations - by completing activities from the previous three sections, you have started to make a difference in your local community. You have also gained an important tool; you can prove that taking action makes a difference. This section helps you to use that tool to encourage others to take action too, particularly 'decision-makers'. Decision-makers are people who make the decisions that affect our lives. They might be on your school board or local council, community leaders, or politicians in local or national government. Speaking out to make a difference is called advocacy. If you stand up for a cause you believe in and influence decision-makers, you are an advocate.

World Thinking Day is a good time to remember that advocacy has been part of Girl Guiding and Girl Scouting for over 100 years. By demanding a 'place for girls' at the 1909 Crystal Palace Rally, girls used advocacy to start the Movement. Being a responsible citizen is one of the core values of Girl Guiding and Girl Scouting. Speaking out against injustice is an important part of being a responsible citizen.

For the World Association of Girl Guides and Girl Scouts, we are advocating when,

"we influence people to take decisions that will improve our lives and the lives of others".

Influencing people always includes:

- Speaking out (on issues that affect girls and young women and to influence decision-makers)
- Doing (projects that address root causes of issues affecting girls and young women)
- Educating (girls, young women and society at large in areas such as leadership, health, peace and world citizenship)

Advocacy is a very exciting and effective way to change the world. This section starts with a list of demands; these are the messages we hope Girl Guides and Girl Scouts around the world will take to their decision-makers, to put our 10 million voices into action. Use one of the activities in this section, or any activity marked SPEAK OUT from sections one to three, to deliver the demands.

Join your voice to the voices of all Girl Guides and Girl Scouts on World Thinking Day and take action to make these demands heard.

Choose one way to deliver the WAGGGS' demands...

DEMANDS AND DECISION-MAKERS

These are words you will read a lot in this section, because demands and decision-makers are very important when speaking out.

Demands = what you want, the change you want to see. WAGGGS has written some demands for you to use, with space to add your own demands that will change your local community.

Decision-makers = Anyone with the power to decide to make your demands happen. This could be a school teacher or someone on your school board, the national board of your Girl Guide/Girl Scout Association, local or national politicians, the local council or community leaders. You need to identify the decision-makers around you.

OUR DEMANDS

Dear decision-maker (1),

The UN Climate Change Convention says in Article 3 that our (2) government "should protect the climate system for the benefit of present and future generations of humankind, on the basis of equity and in accordance with their common but differentiated responsibilities and respective capabilities".

We are the present generation and we want you make a bigger effort to protect our climate system so future generations and we benefit from a healthy environment to live and grow in.

On behalf of our 10 million Girl Guide and Girl Scouts sisters in 145 countries around the world, we (3) ask you to:

Improve the environment for everybody - girls and boys, women and men

Make sure that everybody can equally access safe and clean drinking water, toilets and drainage pipes, clean safe energy and transport, safe shelter and enough locally-grown healthy food.

Guarantee our right to a healthy environment

Make sure that every girl and boy, woman and man live in an environment where they can enjoy their Human Rights. Put a special focus on girls and young women when planning and implementing policies, regulations, programmes and projects that aim to improve the environment. All efforts need to be on a long-term basis and need to help reduce poverty as well as improve the environment.

Show your commitment through investment

Make sure that a certain amount that you spend on environmental projects is put aside for girls and boys, young women and young men. Support the local actions of girls and young women in their communities with financial and other resources, like time, contacts, materials, venues, endorsements, etc. Make an effort to support climate change education, like Girl Guides and Girl Scouts projects and programmes.

Listen to us and our needs

Make sure that there is a substantial and equal amount of girls and boys, young women and young men taking part in your decision-making, especially, but not only, when it relates to climate change and the environment in general. This includes planning and running projects, preparing guidelines, regulations, policies or laws, researching the current situation and how it can be improved as well as spreading the word on issues important to us.

And last but not least, (4)*Signatures* (5)

(1) It looks even more professional if you put the name of the person you want to address

(2) Nearly all UN Member States, including the US, have signed up to the convention. You can check if your country is on the list at http://unfccc.int/essential_background/convention/status_of_ratification/items/2631.php. If not you will need to rewrite the first paragraph

(3) It would be even better if you put 'we, the...' and then the name of your Girl Guide/Girl Scout group or Association

(4) Here you can put your own, concrete and specific demand

(5) The more signatures, the better!

? Did You Know

- Gender equity and civic activism are positively associated with a more robust record of environmental governance.

"Communication is the single most critical factor in the success of any endeavor."

Cheryl Heller, communication expert

GO FURTHER! UPGRADE THE DEMANDS

Our demands are a shorter and easier-to-read version of the WAGGGS position statement on environmental sustainability. Try comparing the demands with the position statement at www.waggs.org to see if you would like to add or change something.

The last point 'And last but not least' is left to you and your colleagues to complete. You should think of something concrete and specific that you would like to request from the decision-maker you approach. Think of something that would improve your life and the life of others. For example a vegetable garden, a well, a windmill, a free school bus, healthy school meals, a bike lane, energy-efficient street lights, a youth parliament or advisory council, etc. There is a saying "be realistic and request the impossible" so be bold. However, it may also be good to be realistic and request something your decision-maker can actually deliver.

Think about how you can find a lot of people to undersign our demands. The more, the better!

PROMOTE YOUR OWN ACTIONS

As you know, leading by example is part of the Girl Guiding and Girl Scouting method. Take this opportunity to show what you are already doing to improve the environment to inspire your decision-makers to take action too. Apart from encouraging others to follow your example, you also get some good publicity and the chance to talk about why Girl Guiding and Girl Scouting is great fun and helps the environment.

Log your actions at

www.worldthinkingday.org.

Share your actions and stories with other Girl Guides and Girl Scouts and help us reach our target of **201,200 actions** by 31 August 2012.

ACTIVITIES

Make it happen – activity ideas to help you deliver the demands

1 VOICE THROUGH ART

Design a sculpture that captures one or more of your demands and obtain permission to publicly display in your local community. Use the sculpture to raise awareness of your demands.

2 MASS MOVEMENT

Prepare a play that communicates your demands and share it with children from your school or local community. Educate them about the power of speaking out and see if they agree with the demands. Use education to attract as many supporters for your demands as possible.

3 COMMON GROUND

Find out about the particular challenges faced by Girl Guides/Girl Scouts in another country. What challenges do you have in common? Get in touch with the Girl Guides/Girl Scouts in that country and share stories of how you are working on environmental issues. Is there something you can do together? Use your partnership to raise awareness of your work on the environment in the media. Visit www.worldthinkingday.org to see other Girl Guide/Girl Scout projects and upload your own activities.

4 SPEAKING PRACTICE

Divide the group into smaller groups of three. Within the three, choose a Speaker, a Listener and an Observer. Ask the speaker to discuss a topic related to the environment. Ask the listener to respond with open questions (beginning with when/where/how/who/what) rather than closed questions (which require a yes/no answer). After three minutes, ask the Observer to give constructive feedback about the Speaker's performance and the quality of the Listener's questions. Rotate the roles.

? Did You Know

- **YWWF delegates** are asking civil society to take individual responsibility for the environment by reducing the human impact on the planet by recycling, local tree planting schemes and encouraging use of local food sources.

5 STAMP YOUR FEET

✧ Younger ✧

Draw round your feet and cut them out. Write in the middle of your left foot one way you will reduce your environmental 'footprint'. On your right foot, write one thing you want decision-makers to change to make the world a better place. Decorate the footprints and display them at your meeting place. Invite local decision-makers to see them.



6 GREENER GIRL GUIDES AND GIRL SCOUTS

✧ Older ✧

Lobby your Girl Guide/Girl Scout Association to support environmental sustainability. Send your Chief Commissioner the list below and ask them what they are doing already. If you see room for improvements send them some suggestions! You can use this list from the WAGGGS position statement as guidance.

- **Deliver** non-formal education programmes to girls and young women to enable them to take an active part in shaping and ensuring a sustainable environment for young and future generations
- **Promote** a sustainable lifestyle that takes into account what impact our actions have on our natural and social environment
- **Use** non-formal education to raise awareness on the right to safe and sufficient water and the right of everyone to an environment that is adequate for general health and well-being
- **Highlight** environmental values as part of the Girl Guiding and Girl Scouting method
- **Develop** skills to gain access to and control over resources and their benefits, especially among girls and young women in rural areas and other marginalised communities. Environmental knowledge and practices translated into life skills will help to shift traditionally subordinate relationships of women to men in resource management
- **Encourage and create** platforms for intergenerational dialogue, exchange and mentoring with the aim to build a sustainable society. Create platforms to exchange ideas as well as learning from older women, including those from indigenous traditions, who can strengthen the knowledge, attitudes and behaviour of girls
- **Develop and expand** North-South and South-South partnerships to help alleviate many of the world's environmental problems, such as climate change, loss of biodiversity, and exhaustion of fishery resources and water
- **Advocate** for local governments to enhance education of girls and young women with practical knowledge of the skills needed to achieve environmental sustainability

INSTRUCTIONS AND TEMPLATES FOR CERTAIN ACTIVITIES

SOLAR COOKER

YOU WILL NEED:

Corrugated cardboard (0.9 x 1.2 metres)

Aluminium foil cut into strips as needed
(0.3 x 3 metres)

Glue, thinned with water

Paintbrush

Utility knife

Pencil/pen

Masking tape

✓ TIPS

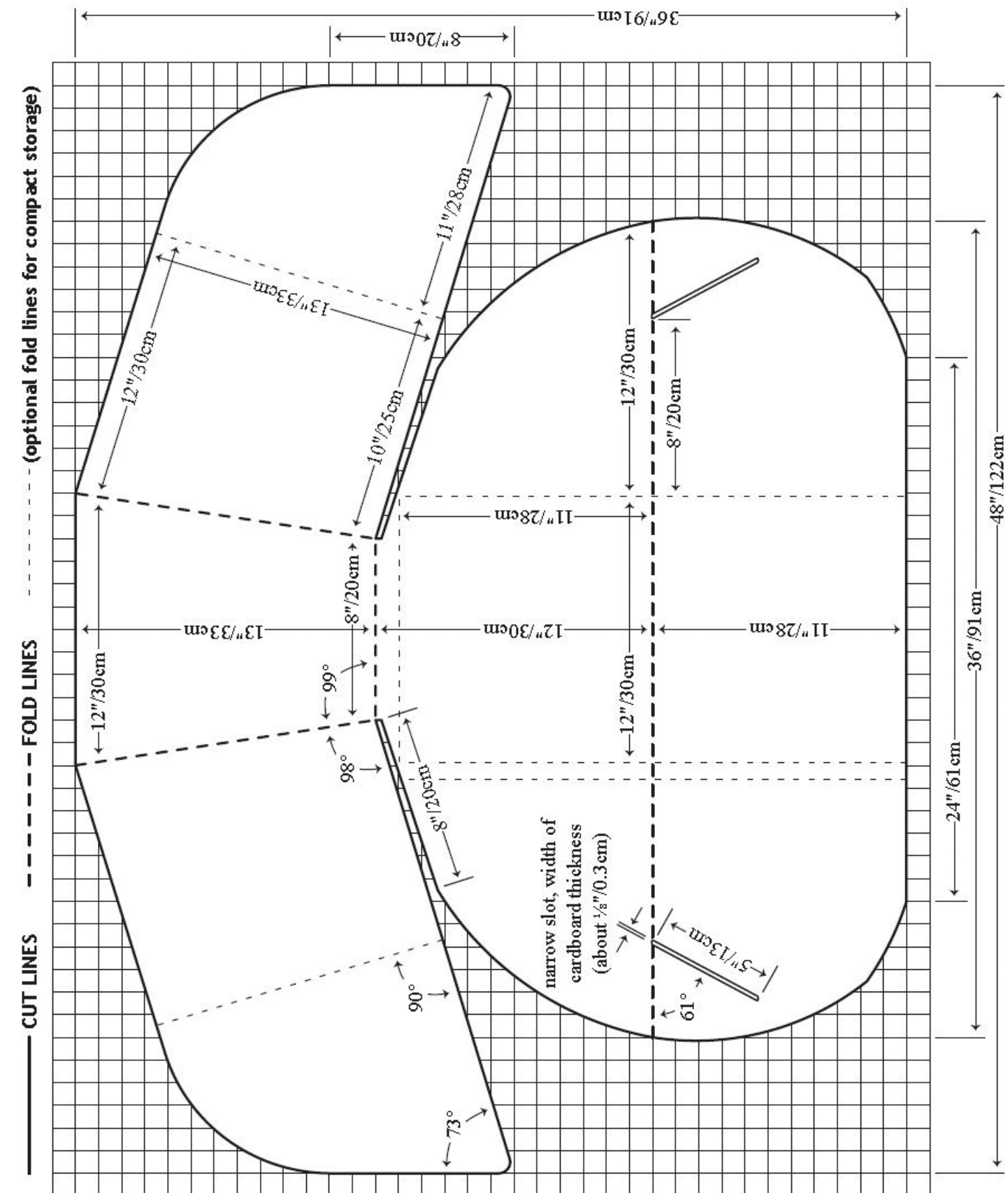
- Try cooking something simple that doesn't take too long the first time you use your cooker
- Set up your cooker facing the sun
- Use dark coloured pots for your food
- Once you have filled the cooking pot, put it inside a clear plastic oven-proof bag to create the greenhouse effect!
- Put your cooking pot right into the back of the solar cooker for best effect
- Allow plenty of time. Food doesn't tend to overcook in a solar cooker so allow lots of time and don't worry about it overcooking. You also don't need to stir the food while it's cooking

- 1 To make a solar cooker, draw the pattern opposite on the cardboard
- 2 Cut out the shape carefully. Keep the slots narrow so the panels fit securely together
- 3 Score the fold lines using a blunt edge and fold along the lines, being sure to keep the fold lines straight. Only score the optional fold lines if you need to fold the cooker for compact storage

- 4 Using a paintbrush, spread the glue on the dull side of the aluminium foil and smooth the foil onto the cardboard, pressing tightly until it is stuck
- 5 Leave flat to dry then trim any excess foil. Bind edges with masking tape or similar
- 6 Once dry, fold up the cooker walls and push the corners through the slots to keep the cooker in shape



For more information and other cooker designs, see
www.solarcooking.org



NEWSPAPER BAG

YOU WILL NEED:

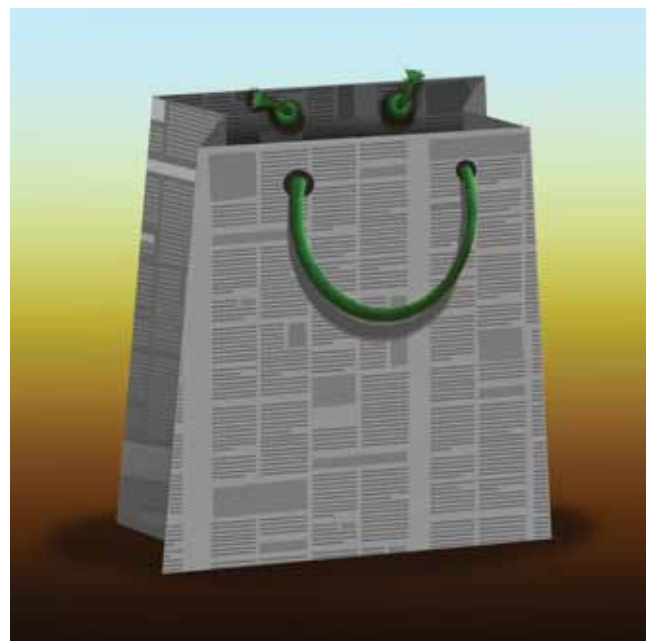
Two sheets of newspaper

Glue or a mixture of two spoons flour to one spoon water

Two strips of card, each 20cm x 1.5cm

Two lengths of string or similar for the handles

- 1 Lay the two sheets of newspaper flat on top of each other and stick them together by one long edge
- 2 Fold over this pasted edge about 4cm from the top then fold back again to make a straight line
- 3 Spread glue along the edge of the paper above your fold
- 4 Stick a strip of card 3cm away from the left hand side, its bottom edge against the fold line. Do the same on the right-hand side
- 5 Spread glue over the two strips of card and fold over
- 6 Label the left edge of the paper 'A' and the right edge 'B'
- 7 Fold side A towards the middle, using the end of the card strip as a guide for how far to go
- 8 Do the same with side B. It should overlap side A by about 3cm. Make the folds sharp
- 9 Lift the top sheet ONLY of side B where it is folded over. Spread glue on the bottom layer and slot the edge of side A between the two sheets of side B
- 10 Spread glue along the top of side A and press down the top layer of side B.
- 11 Open the bag out and make another sharp fold about 8cm from the existing folds. Use this fold to press the bag flat, which will make another fold on the opposite side. The bag will now be a rectangle, joined at the sides but open top and bottom



- 12 Take two of the side folds next to each other and press them together, folding the paper between them inwards to make a side pleat. Repeat for the other side
- 13 Keeping the bag flat with the side pleats folded inwards make a fold about 6cm from the bottom edge and crease firmly. Unfold, bend the other way and crease again
- 14 Open the bag up fully and tuck in one bottom edge along the fold line, creasing the corners into triangles and sticking them bottom edges, opposite sides together, along the fold lines. Crease the corners into triangles and stick in place. Do the same to the opposite side of the bag
- 15 Fold in and stick the other two bottom sides, which make the base flaps. Put some glue along the inside of one bottom edge to seal the base of the bag. Press the joins together firmly
- 16 Make two small holes on each side of the top rim of the bag, about 7cm apart. Thread your handles through and tie each end around the rim with a reef knot

GO SHOPPING!

To learn more about how people are making a difference with newspaper bags, look at www.newspaperbagproject.com

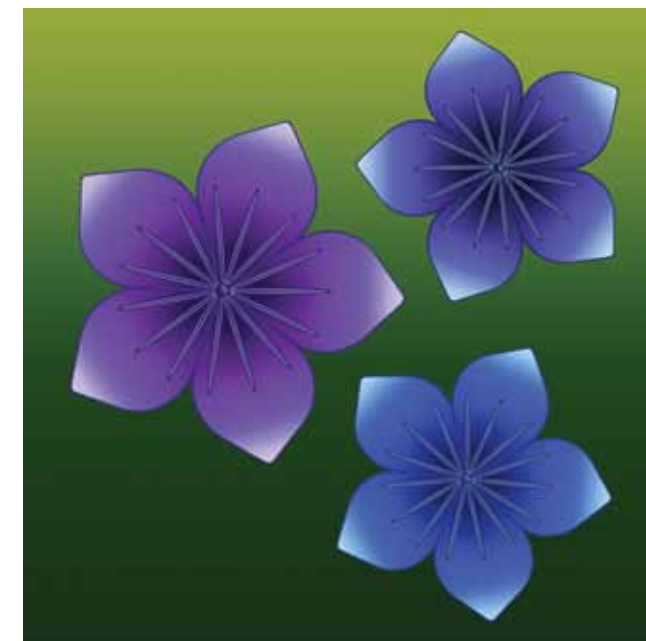
KUSUDAMA FLOWER

YOU WILL NEED:

Five equally sized squares of paper (makes one flower)

Glue

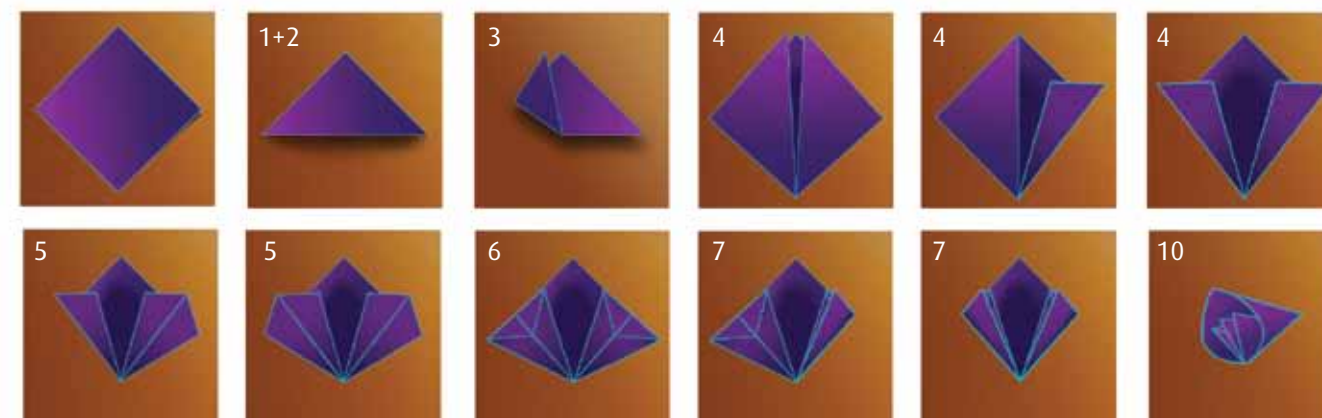
- 1 Fold the square in half diagonally, making a triangle
- 2 Put the triangle down with the longest edge at the bottom
- 3 Fold the left corner up to the middle corner and repeat with the right corner, making a square
- 4 Fold each of these corners back on themselves half way, so the edge lines up with the side of the square
- 5 Open out each side triangle and press down to make kite shapes. Your paper should now look like three kites with their tails together
- 6 Fold the top triangles of the outside two kite shapes down so they are level with the edges of the paper
- 7 Fold the triangles back in, using the crease from earlier. This should make a square shape again
- 8 Spread glue on the tops of the two folded sections facing you
- 9 Bend the folded sections together and press tightly until stuck
- 10 That's one petal finished! Repeat four more times then glue the petals with the folds into the middle, to make a kusudama flower



"We do not inherit the world from our parents; we borrow it from our children."
Native American proverb

? Did You Know

- As it takes more time to gather water and fuel, the available time for education or other economic and political activities decreases. Already, the majority of children worldwide who do not attend school are girls.



For picture instructions and other great origami ideas, visit

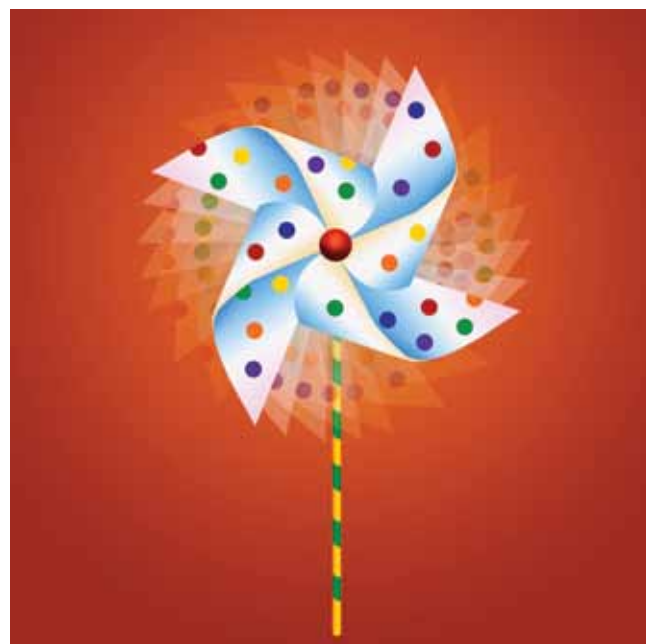
<http://foldingtrees.com/2008/11/kusudama-tutorial-part-1>

PINWHEEL TURBINE

YOU WILL NEED:

- A square of paper, such as 20cm x 20cm
- A pen/pencil
- Materials to decorate your pinwheel turbine
- A pin
- A stick/similar for the handle

- 1 Working clockwise, number the corners of your square of paper one, two, three and four
- 2 Draw a dotted line between corners one and three, and corners two and four
- 3 Where the lines cross (in the middle of your square) measure a short equal distance along each line and make the line solid, so there is an 'X' in the middle of your square
- 4 Decorate the blank side of your paper as you wish
- 5 Cut along the dotted lines, leaving the 'X' to hold the square together
- 6 Take corner one and hold it to the middle of the 'X'
- 7 Holding corner one in place, put corner two on top of corner one, corner three on top of corner two and corner four on top of corner three
- 7 Push a pin through all the corners and into the top of your stick. Don't make it too tight
- 8 Hold your pinwheel turbine against the wind and watch it spin!



*When one tugs at a single thing in nature,
he finds it attached to the rest of the world.*

John Muir, conservationist

? Did You Know

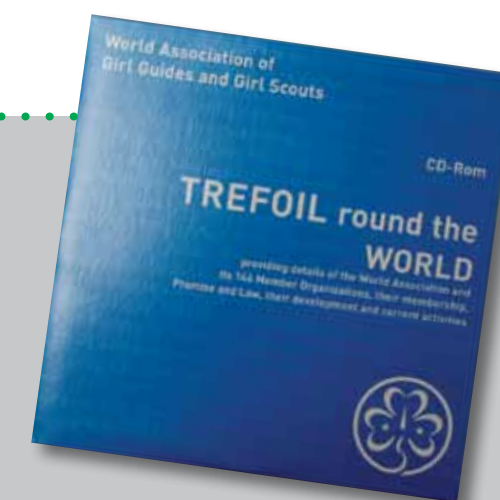
Erratic rainfall and unseasonal temperatures already challenge farmers, especially small landholders who have less capacity to adapt. In Africa, the proportion of women affected by climate-related crop changes could range from **73 per cent** in the Congo to **48 per cent** in Burkina Faso.

FABULOUS WORLD THINKING DAY MERCHANDISE!

Don't miss out, there is more merchandise to collect...

Want to learn more about the Girl Guiding and Girl Scouting Movement in other countries? Then order your copy of **Trefoil Around The World** today and learn all about your sister Girl Guides' promise, songs, and history!

Why not collect World Thinking Day merchandise from previous years? Start now to collect badges on all eight MDGs by 2015!



Visit WAGGGS' online shop for even more badges, pins, T-shirts and other merchandise for World Thinking Day, Global Action Theme, Climate Challenge and Biodiversity Challenge, as well as centenary!

www.wagggs-shop.org

RESOURCES AND LINKS

Global Alliance for cleaner cookstoves

<http://cleancookstoves.org/overview/>

A Liter of Light (bringing plastic bottle solar lights to poor communities)

<http://isanglitrongliwanag.org/>

Moving Planet Campaign 350.org

www.moving-planet.org/

2012 International Year of Sustainable Energy for All

www.sustainableenergyforall.org/

Youth Exchange Toward Sustainable Lifestyles

www.youthxchange.net

Clean up the World

www.cleanuptheworld.org/en/

World Thinking Day

www.worldthinkingday.org

MDG 7 section on the WAGGGS website

http://www.wagggsworld.org/en/take_action/MDGprogrammes/Climatechange

United Nations Environment Programme (UNEP)

www.unep.org

ENVIRONMENTAL CALENDAR

2011 - 2012

28 November 2011 UN climate change conference COP 17, Durban, South Africa

22 February 2012 World Thinking Day

22 March 2012 World Water Day

31 March 2012 8.30pm-9.30pm GMT Earth Hour

22 May 2012 International Day for Biological Diversity

4 June 2012 Rio +20 Earth Summit, Rio de Janeiro

5 June 2012 World Environment Day

8 June 2012 World Ocean Day

November 2012 UN climate change conference COP 18, countries currently bidding to host the event

WORLD THINKING DAY 2012 ACTIVITY LOG

HOW I AM HELPING SAVE THE PLANET!

Make your actions count!

We aim to reach 201,200 actions by 31 August 2012

Visit the World Thinking Day website and log your actions!

The World Thinking Day website gives all members a chance to make their mark by recording how many actions they have taken towards saving the planet. Every pound (£) donated or activity completed counts as one action and our target is **201,200 actions**.

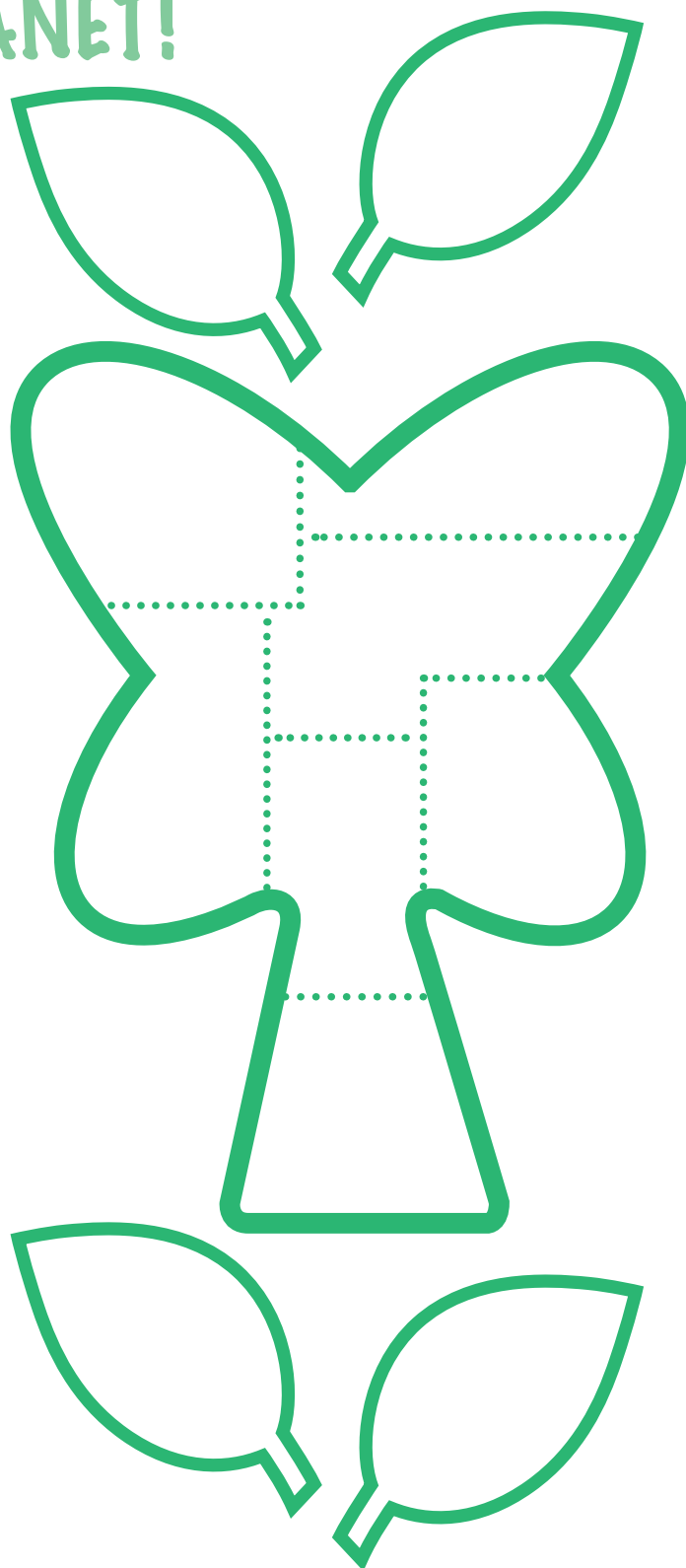
Log your actions, view the map of actions and see what a huge impact Girl Guides and Girl Scouts around the world can have when they work together!

www.worldthinkingday.org

Use this World Thinking Day tree to keep track of your activities. As you complete an activity, write what you did in one part of the tree and colour it in. Remember, you should do two activities from each of sections one, two and three and one activity that delivers the demands from section four – one of these activities should be a fundraiser for the WAGGGS World Thinking Day fund. You can trace the tree onto another sheet of paper so everyone in your group can have a tree of their own!

Don't forget to upload your activities to the World Thinking Day website

www.worldthinkingday.org



World Association of Girl Guides and Girl Scouts

I would like to make a World Thinking Day donation

(Please tick ✓ currency and amount and then select your method of payment below)

☐ 1000 ☐ 500 ☐ 250 ☐ 150 ☐ 50 ☐ 25 ☐ £ ☐ \$ ☐ € ☐ other amount

☐ **Cheque/Draft** Please find enclosed my cheque payable to **WAGGGS**

Credit Card

Please debit my: ☐ Switch/Maestro [Issue Number _____]

☐ Delta

☐ Visa

☐ Mastercard

☐ AmEx

☐ Eurocard

☐ JCB

☐ Electron

☐ Solo

Card No

Card Start Date

Card Start Date

Card security code (Last 3 or 4 digits on signature strip)

Name of bank/financial institution issuing card

Name on card

Card start date

Our bank will only take credit card transactions in sterling. We will therefore convert your \$ or € donation into £ at the current rate of exchange and debit your card with this amount. This may result in a very small discrepancy from your original donation amount when your credit card statement is received.

☐ **Bank Transfer**

I made a Bank Transfer on [enter date]

Bank: National Westminster Bank Plc
Belgravia Branch
PO Box 3043
141 Ebury Street
London SW1W 9QP, England

Sort Code / Bank Number: 60-07-29
Payee / Credit: WAGGGS
Account Number: 39872947
IBAN Code: GB47NWBK60072939872947
IBAN BIC: NWBKGB2L

AFTER MAKING YOUR BANK TRANSFER PLEASE REMEMBER TO FORWARD THIS COMPLETED FORM TO WAGGGS

Personal Details – YOU MUST COMPLETE THIS SECTION IN FULL FOR ANY DONATION

First Name

Last Name

Address

Postcode

Country

email Address

Signature

Date

If donation is on behalf of a **Trefoil Guild** please write Guild name here

[Product Code: TD Mailing – Trefoil Guilds]

giftaid it

If you're a United Kingdom Tax payer, WAGGGS can reclaim an additional 28 pence in each pound donated. You must pay an amount of income tax and/or capital gains tax equal to the tax we reclaim on your donations.

(We can only claim Gift Aid on individual donations.)

Please indicate below if you're eligible & wish your donation to be treated as a Gift Aid donation.

☐ I am a UK tax payer

☐ I am NOT a UK tax payer

☐ Please claim Gift Aid on my donation

Return to **WAGGGS**, World Bureau, Olave Centre, 12c Lyndhurst Rd, London, NW3 5PQ England

Tel: +44 (0) 20 7794 1181 | Fax: +44 (0) 20 7431 3764 | Email: wtd@wagggsworld.org

Registered Charity No. 306125

The information you give will be treated as confidential and it is WAGGGS policy not to give private information away. We will add your details to our database and keep you regularly informed about WAGGGS and our fundraising activities. If you would rather not receive such information, please tick here ☐

For Office use only:

Source	Date received	Acknowledged	Date to Bank	Initials



World Association
of Girl Guides
and Girl Scouts

Association mondiale
des Guides et des
Eclaireuses

Asociación
Mundial de las
Guías Scouts

World Bureau, Olave Centre
12c Lyndhurst Road, London NW3 5PQ, England

telephone: +44 (0)20 7794 1181
facsimilie: +44 (0)20 7431 3764
email: waggggs@wagggsworld.org
www.waggggs.org

Registered as a Charity (No.306125)
in England and Wales

© WAGGGS, September 2011



The paper used in this publication
is made from recycled fibres or wood
from sustainably managed forests